

Cavalier

Carpets



Stock
axminster



CLICK ON ANY DESIGN TO VIEW IN VISUALISER

colour tin Creations

A collection of eight axminster carpets, in-stock and ready to roll. Inspired by the work of famous painters; all created using a select palette of colours to make a big impression.

Ideally suited for use in a host of hospitality locations. Muted tones and highlights that are designed to co-ordinate with fabrics and other finishes. Brushstrokes of genius which will look like you painted them yourself.

in stock



Monet



CLICK ON ANY DESIGN TO VIEW IN VISUALISER

"The point is to know how to use the colours, the choice of which is, when all's said and done, a matter of habit."

MONET

Repeat: 1.00m x 1.00m, Half Drop

colour tin Creations





CLICK ON ANY DESIGN TO VIEW IN VISUALISER

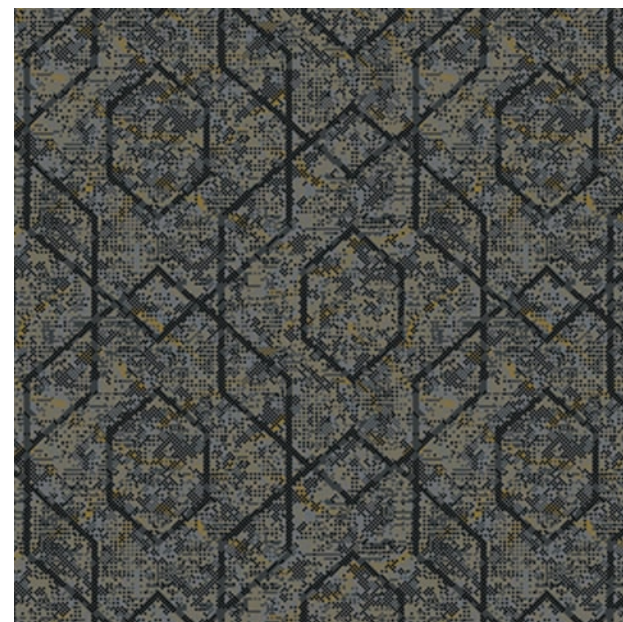
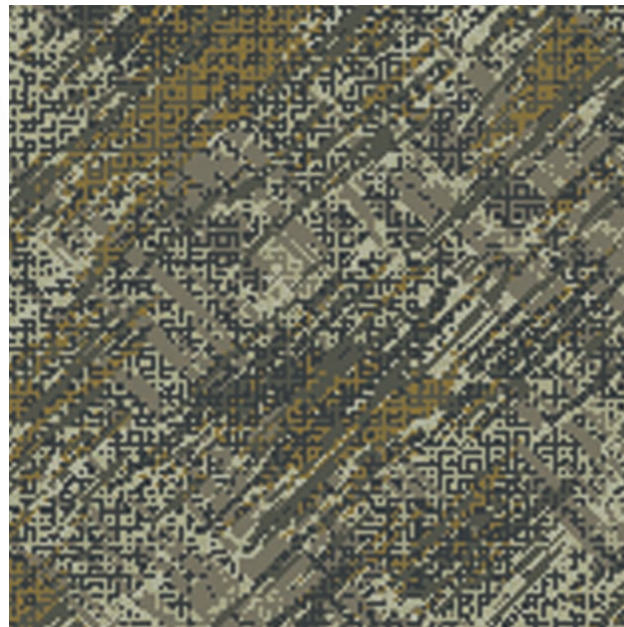
Mary Cassatt

"I think that if you shake the tree, you ought to be around when the fruit falls to pick it up."

colour tin Creations

CASSATT

Repeat: 1.00m x 0.99m, Straight Match



Matisse



CLICK ON ANY DESIGN TO VIEW IN VISUALISER

"I am as curious about colour as one would be visiting a new country, because I have never concentrated so closely on colour expression.

Up to now I have waited at the gates of the temple."

MATISSE

Repeat: 0.67m x 0.56m, Straight Match

colour tin Creations



CLICK ON ANY DESIGN TO VIEW IN VISUALISER

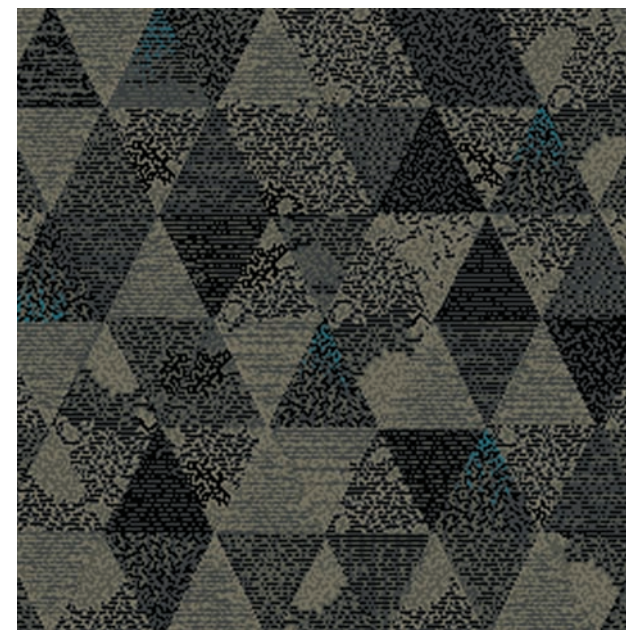
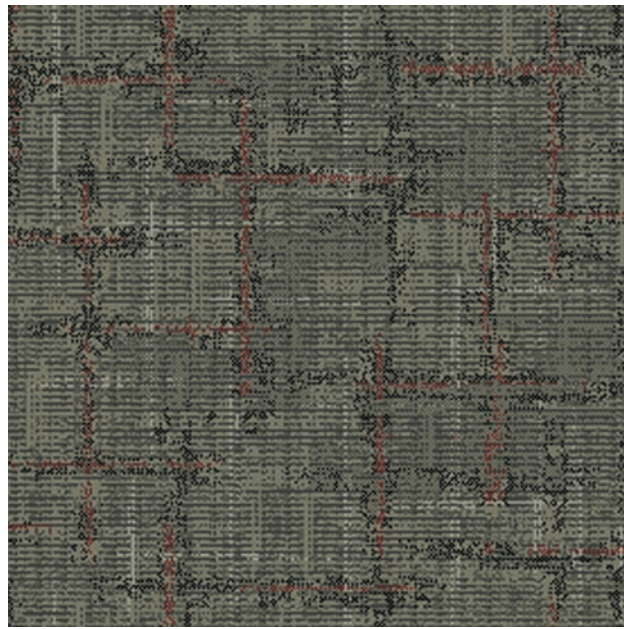
Gauguin

"Colour which, like music, is a matter of vibrations, reaches what is most general and therefore most indefinable in nature: its inner power."

colour
tin
Creations

GAUGUIN

Repeat: 1.00m x 1.00m, Half Drop



Mondrian

"Every true artist has been inspired more by the beauty of lines and colour and the relationships between them than by the concrete subject of the picture."



CLICK ON ANY DESIGN TO VIEW IN VISUALISER

MONDRIAN

Repeat: 1.00m x 0.97m, Straight Match

colour
tin
Creations



CLICK ON ANY DESIGN TO VIEW IN VISUALISER

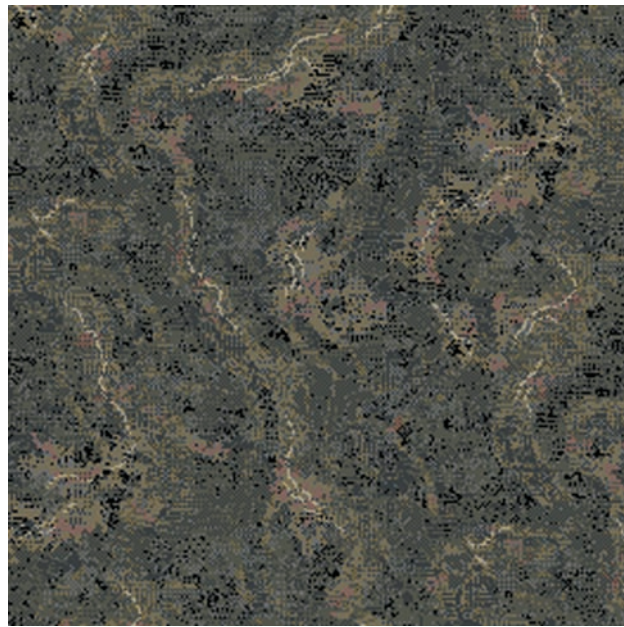
Renoir

"With a limited palette, the older painters could do just as well as today... what they did was sounder."

colour tin Creations

RENOIR

Repeat: 0.67m x 1.00m, Half Drop



A. Rodin

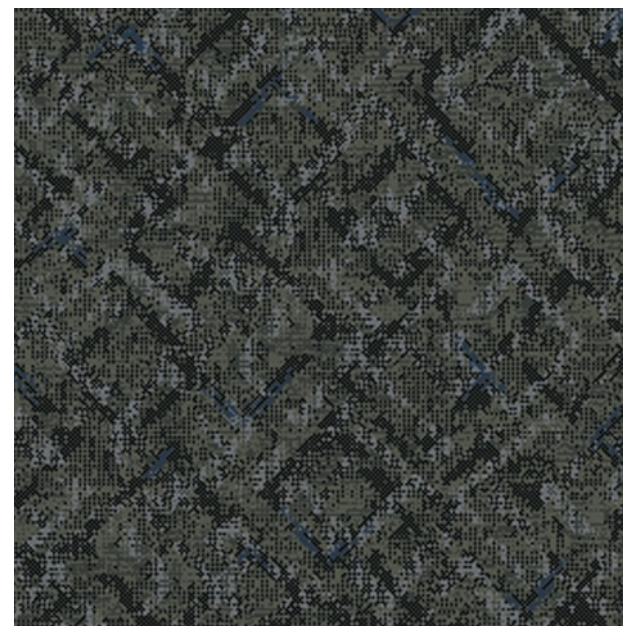


CLICK ON ANY DESIGN TO VIEW IN VISUALISER

"Now colour... is the flower of fine modelling. These two qualities always accompany each other, and it is these qualities which give to every masterpiece of the sculptor the radiant appearance of living flesh."

RODIN

Repeat: 1.00m x 1.18m, Straight Match



colour tin Creations

CLICK ON
ANY DESIGN
TO VIEW IN
VISUALISER

Degas

"One must have a high opinion of a work of art – not the work one is creating at the moment, but of that which one desires to achieve one day."

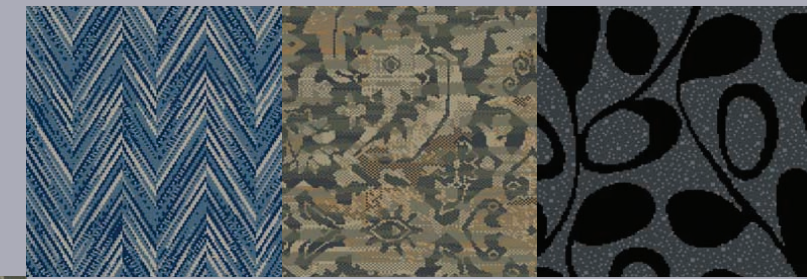
colour
tin
Creations

DEGAS

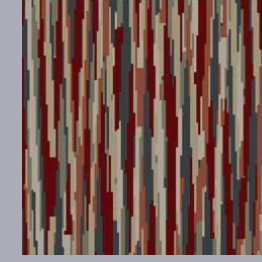
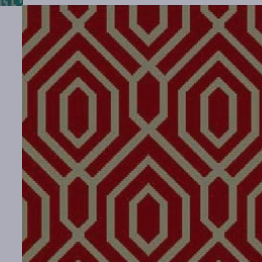
Repeat: 1.00m x 0.93m, Straight Match



bespoke



go *Create...*
...with colour
tin



...when stock doesn't quite complete the picture, explore the endless possibilities which the colour tin offers...

Sixteen stock yarn colours to suit all areas of the contract market place. Perfect when you need a bespoke carpet with short lead times and custom dyeing is not an option.

ColourTin allows designers and specifiers the flexibility to create new exciting designs and colour schemes within a structured colour bank which is ready to weave, on completion of approved samples.

Axminster qualities range from 6 to 10 rows per inch and are suitable for all locations and budgets.

Available in 3.66 and 4.00m width options, with the assurance of IMO certification for use in marine environments.

SPECIFICATIONS

Construction	Gripper Axminster
Pile Content	80% Wool, 20% Nylon
Yarn Count	3/42's
Warp	Polyester
Weft	Jute
Backing Finish	Fray Resist Latex
Width	13'1"/4.0m
Pitch (per inch)	7
Rows (per inch)	7
Pile Height	7mm
Total Carpet Thickness	10mm
Yarn Weight oz/yd ² g/m ²	36 1220
Finished Weight oz/yd ² g/m ²	62 2100
Flammability	EN 13501-1
Radiant Panel Test:	Pass
Bfl - BS: 4790	
Hot Metal Nut Test:	Pass - Low radius of effects of ignition.
Light Fastness	BS: 1006 (1-8) 4-5
Wet Fastness	BS: 1006 (1-5) 4
Colour Matching:	Due to variation in raw material bulk dye, matching may vary slightly from the colours shown in the sample.



IMO Wheelmark



CE EN 14041 2004
Classification Cfl s1
(C Flooring)



3 Ply Yarns



Moth Resistant

All specifications subject to British standard manufacturing tolerances.

Cut-pile carpets, may show shading/pile reversal. This tendency is inherent in all cut pile fabrics and is not detrimental to the wear of the carpet. It cannot be considered a manufacturing defect. It should be noted and taken into consideration when selecting colours that darker shades camouflage soiling more than lighter shades. This applies particularly to contract installations.

Cavalier Carpets

Dixon St. Blackburn
Lancashire BB2 1TX
Tel: 01254 268000

info@cavaliercarpets.co.uk
www.cavaliercarpets.co.uk

