

# Cavalier

Carpets



Bespoke  
musallas

---

# Bespoke musallas

In keeping with our philosophy of adapting to the ever changing market place, we now find ourselves in the position of also being the country's leading flooring provider to mosques & islamic teaching establishments.

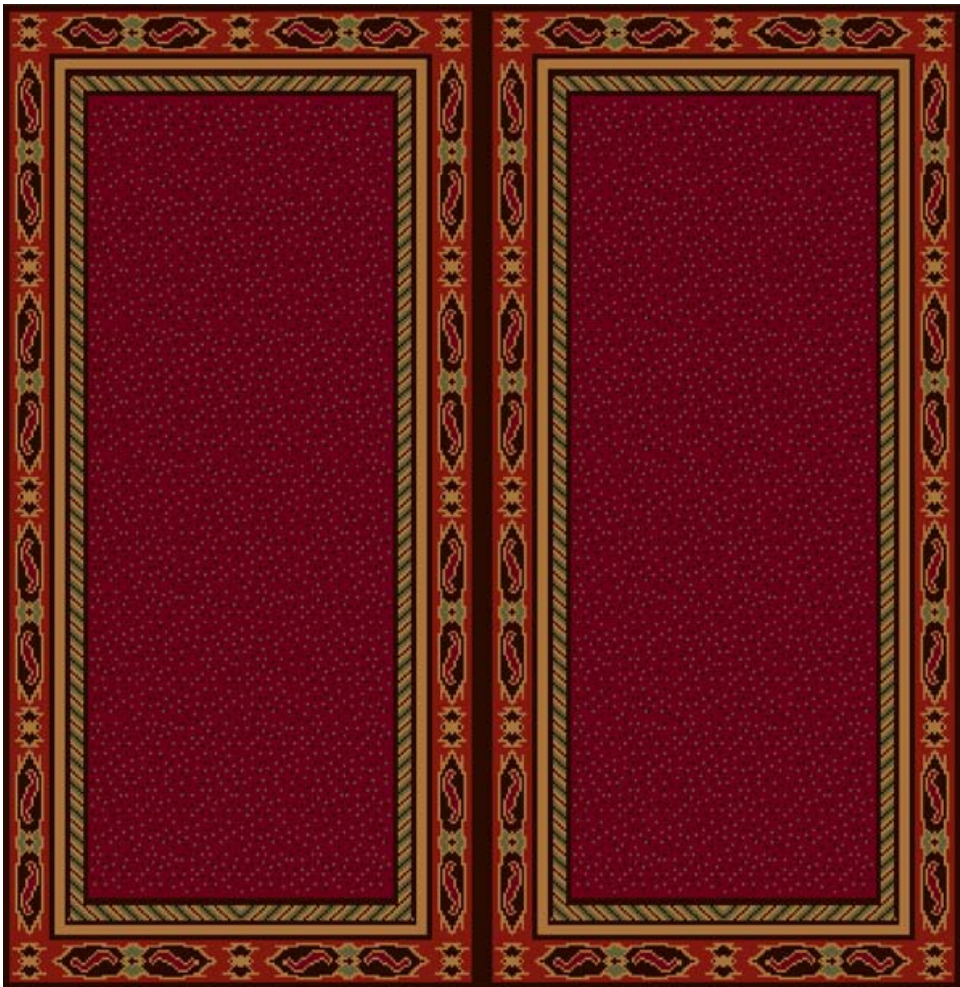
---



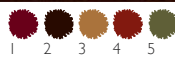
Our in-house designers are capable of assisting you with the conception of individual ideas, recolourations & the specification of finished carpet to meet your particular performance & aesthetic requirements.

Designs for mosques (masjids) and prayer halls (jamatkhana) are generally characterised by a niche at one end, representing the mihrab in every mosque, a directional point (Qibla) to direct the worshipper towards Mecca.

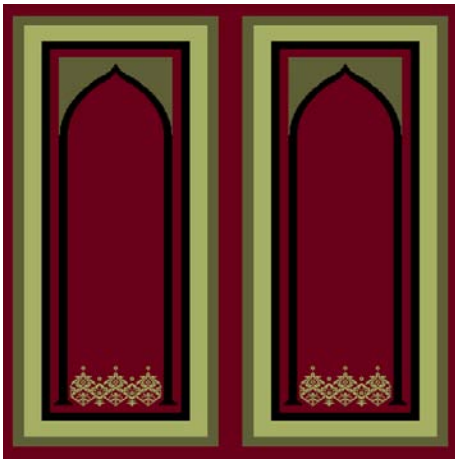




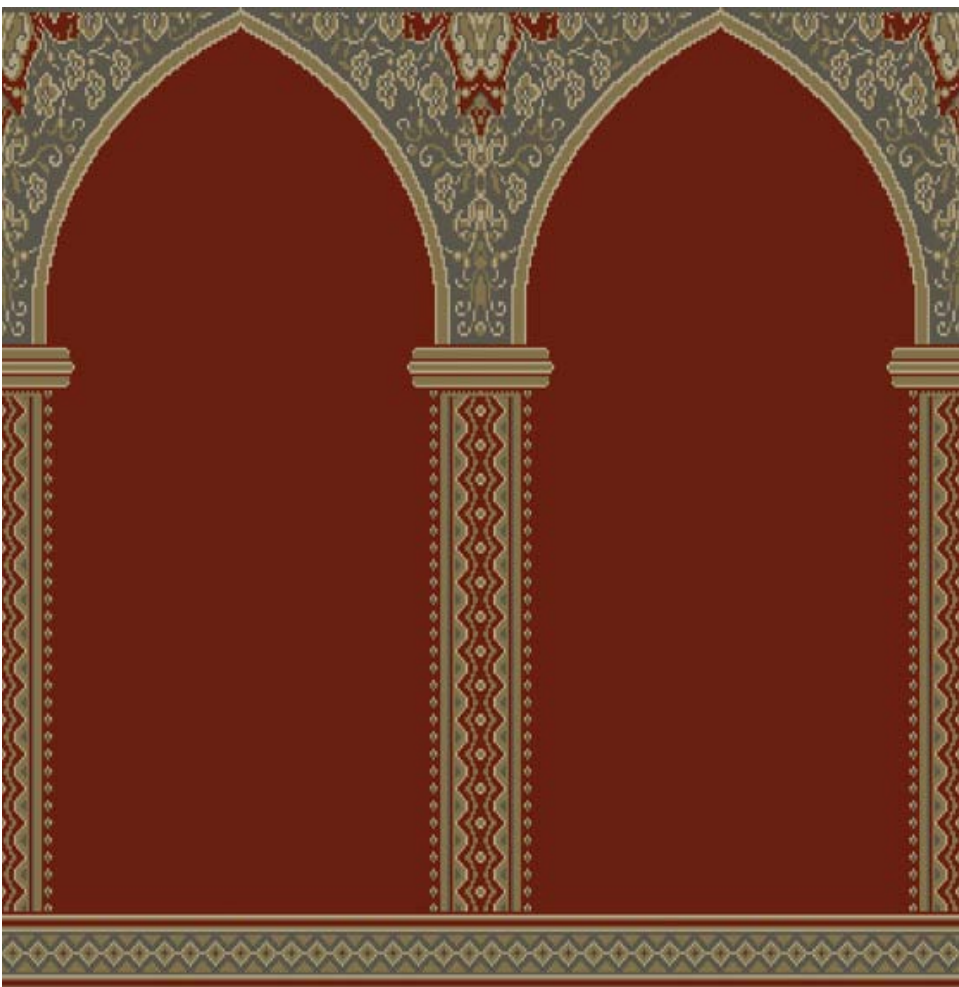
Musalla 8



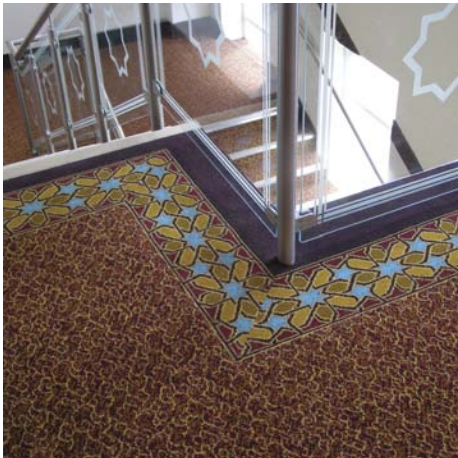
Musalla 8



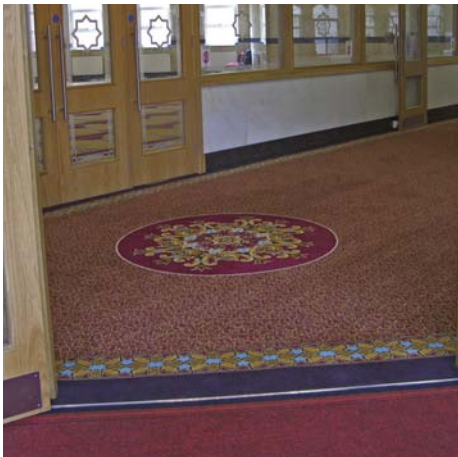
AP-I5518



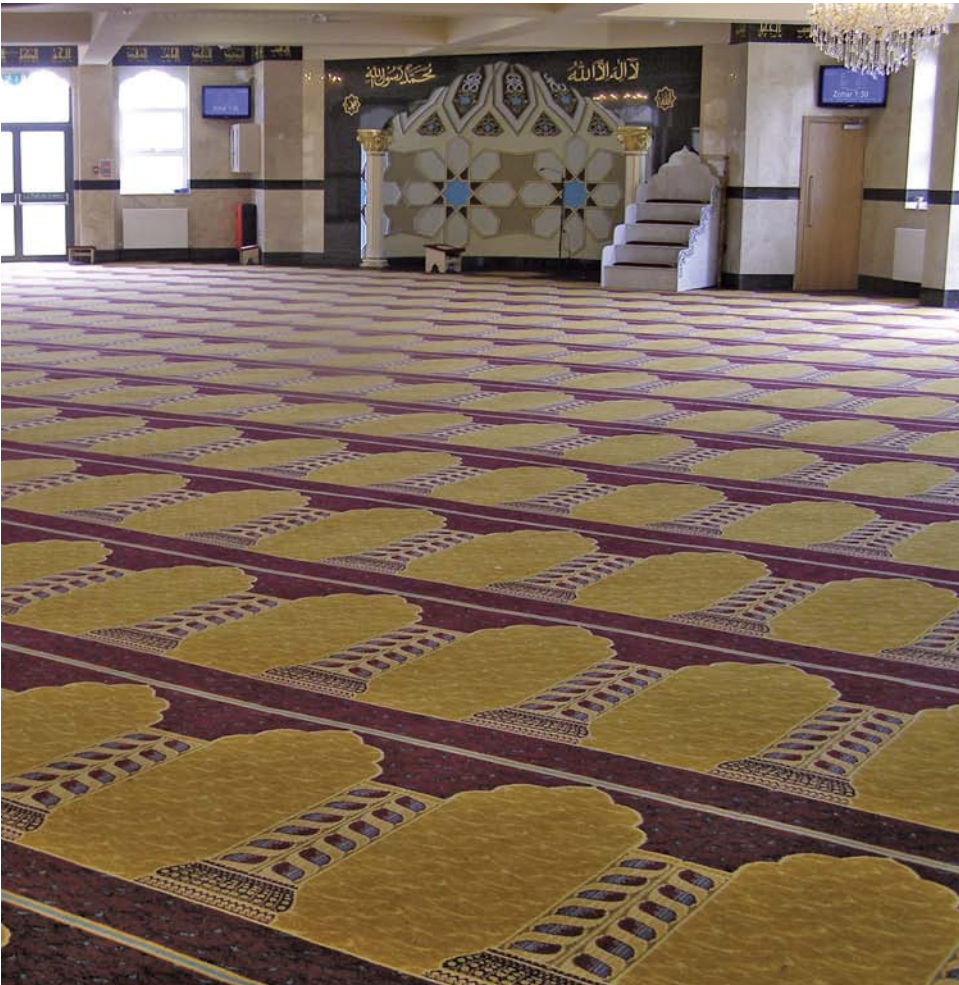
AP-I5498



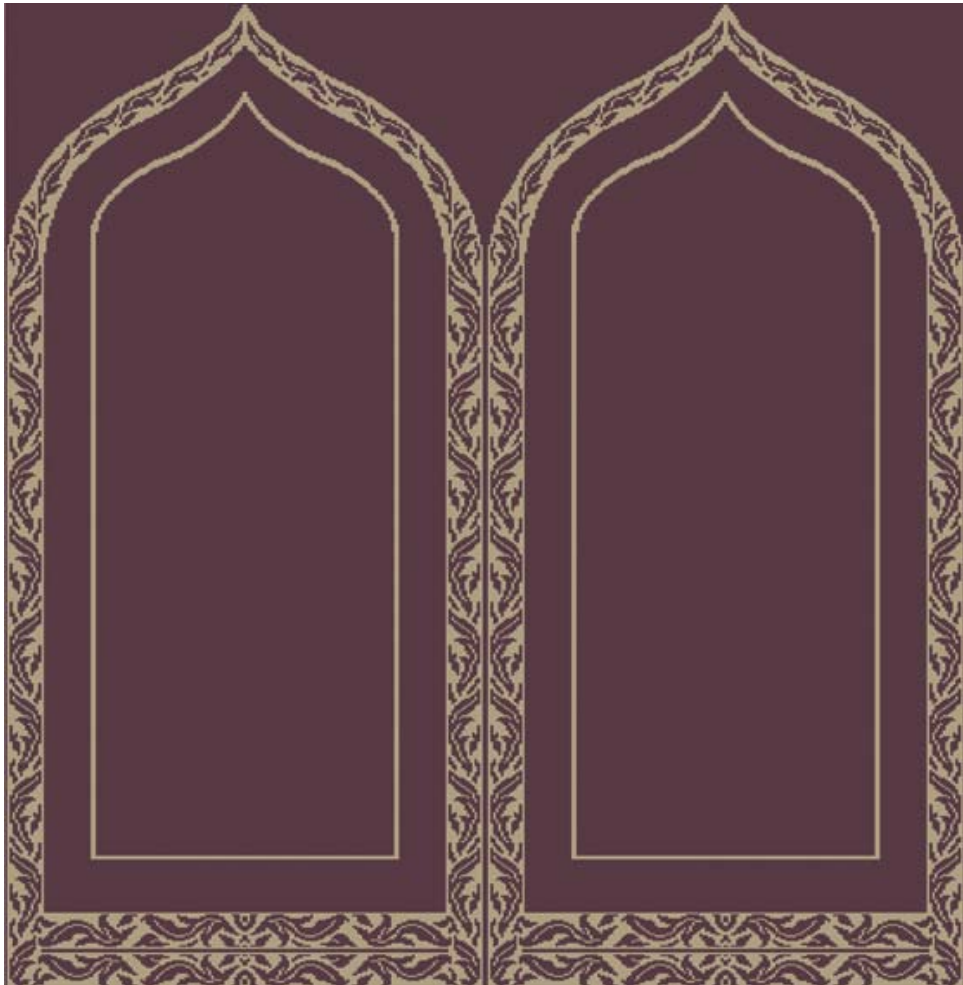
Masjide Nooru Islamic Centre



Masjide Nooru Islamic Centre



Masjide Nooru Islamic Centre Blackburn



AP-I5517



Musalla 17



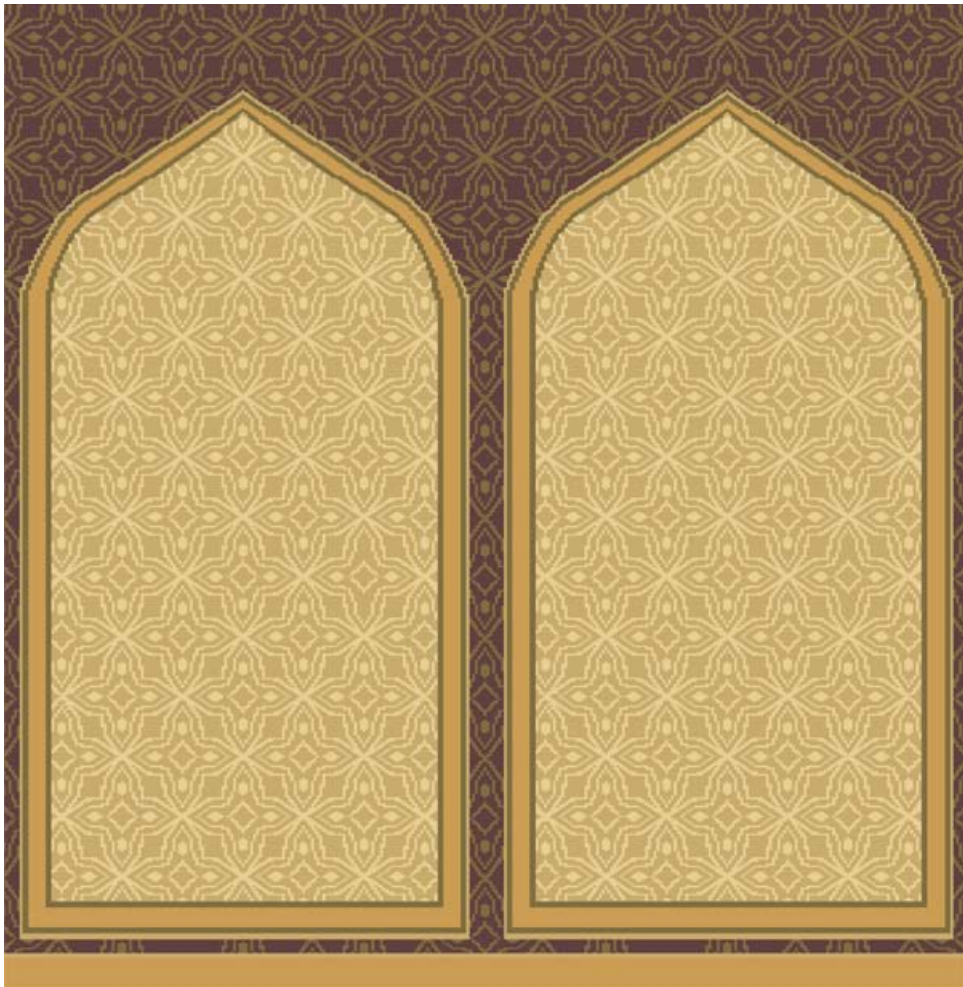




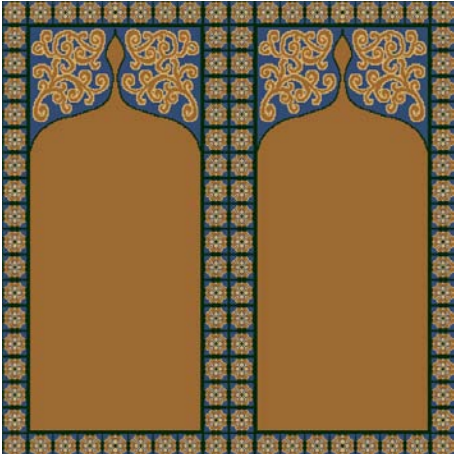
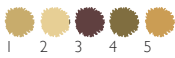
Preston Islamic Teaching Centre



Preston Islamic Teaching Centre



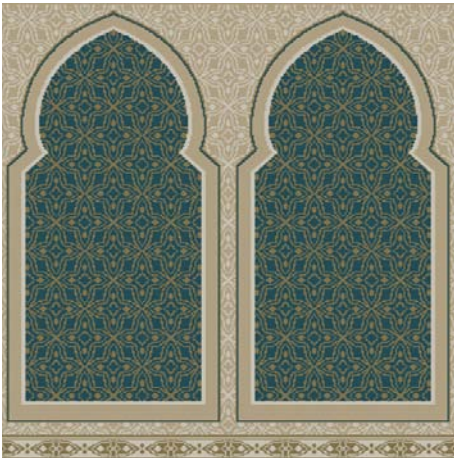
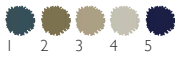
Musalla 18



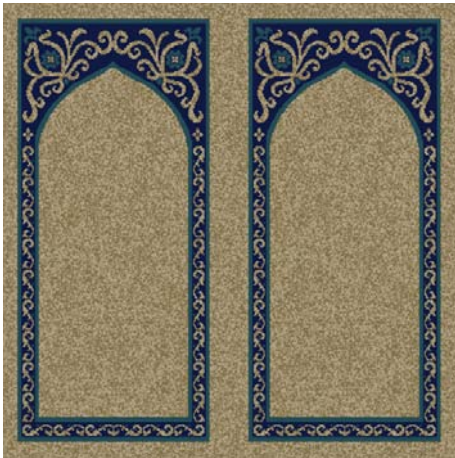
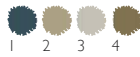
Musalla 3



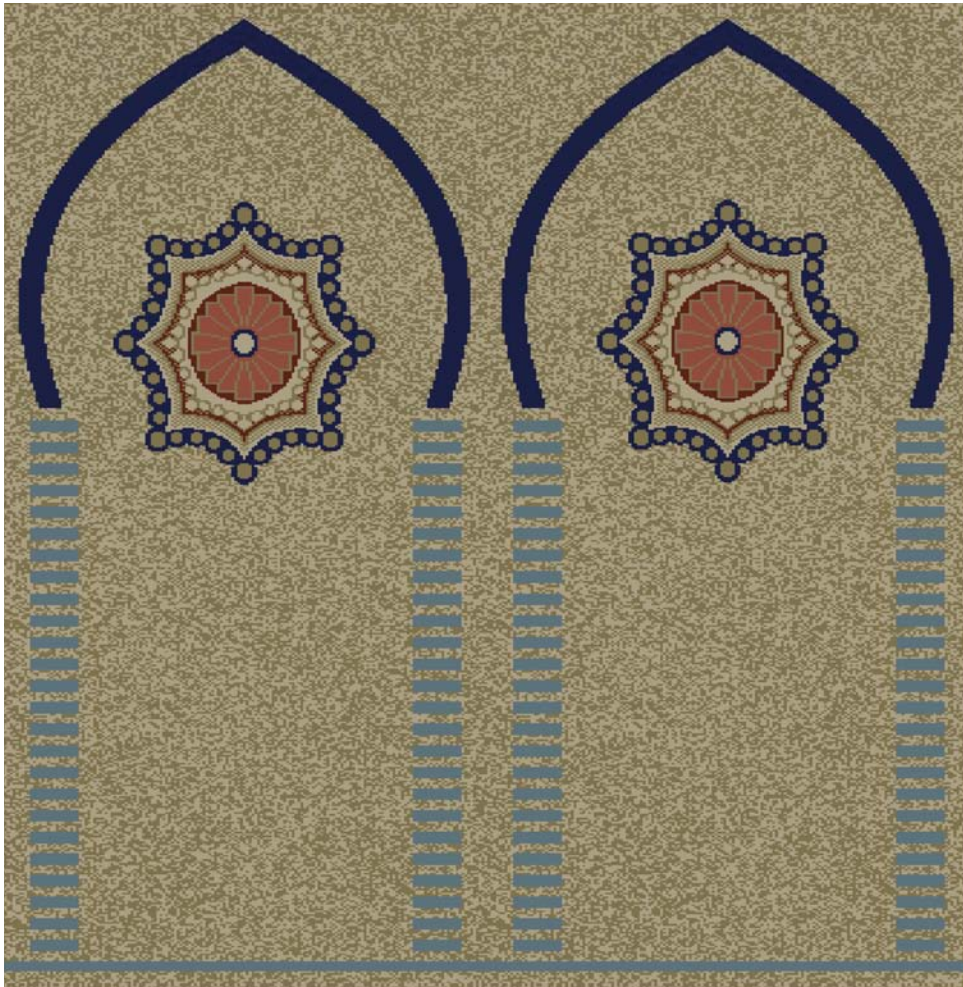
AP-I5500



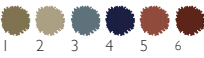
AP-I5501



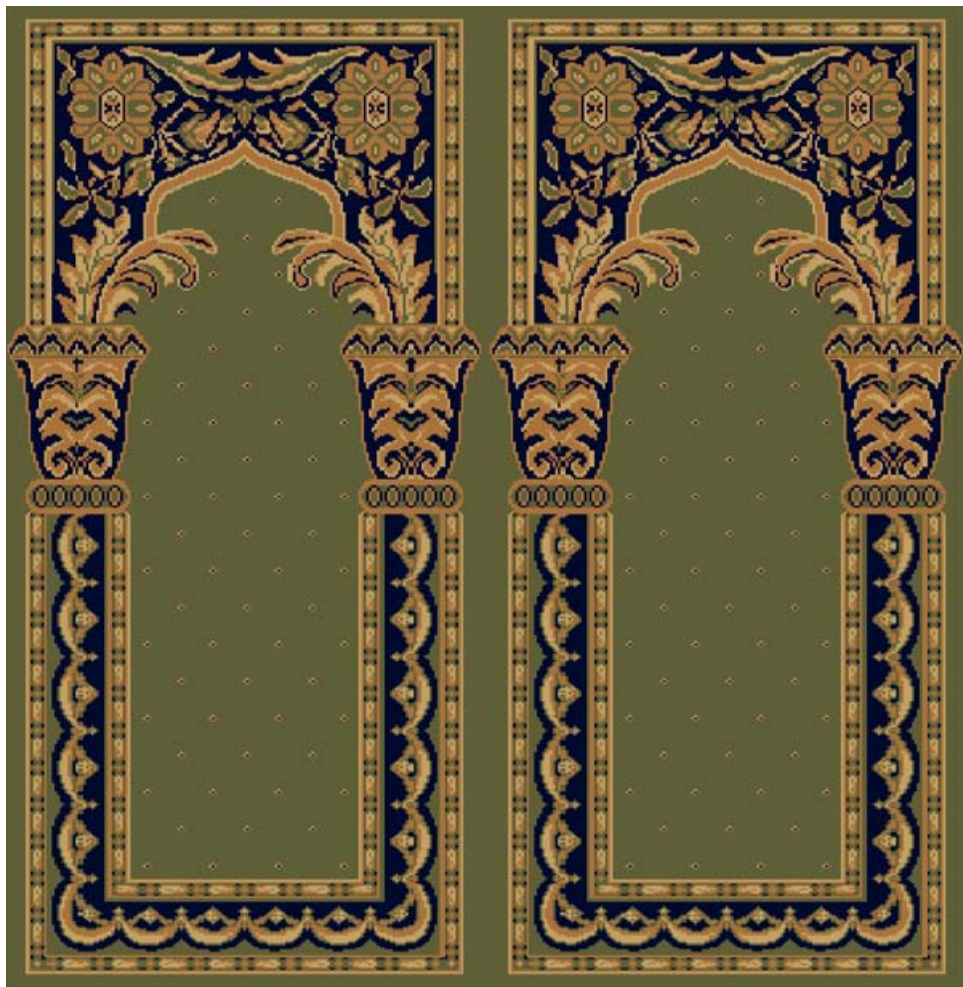
AP-I5527



AP-I5499







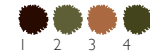
Musalla 4



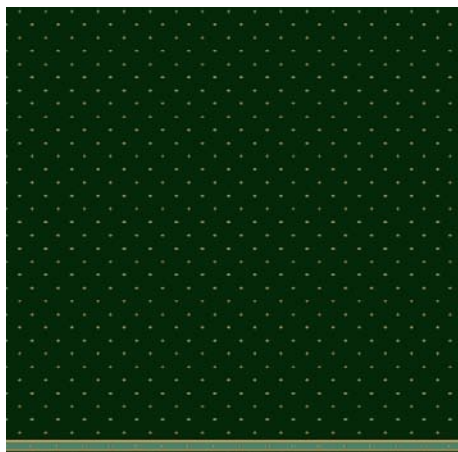
Musalla 5



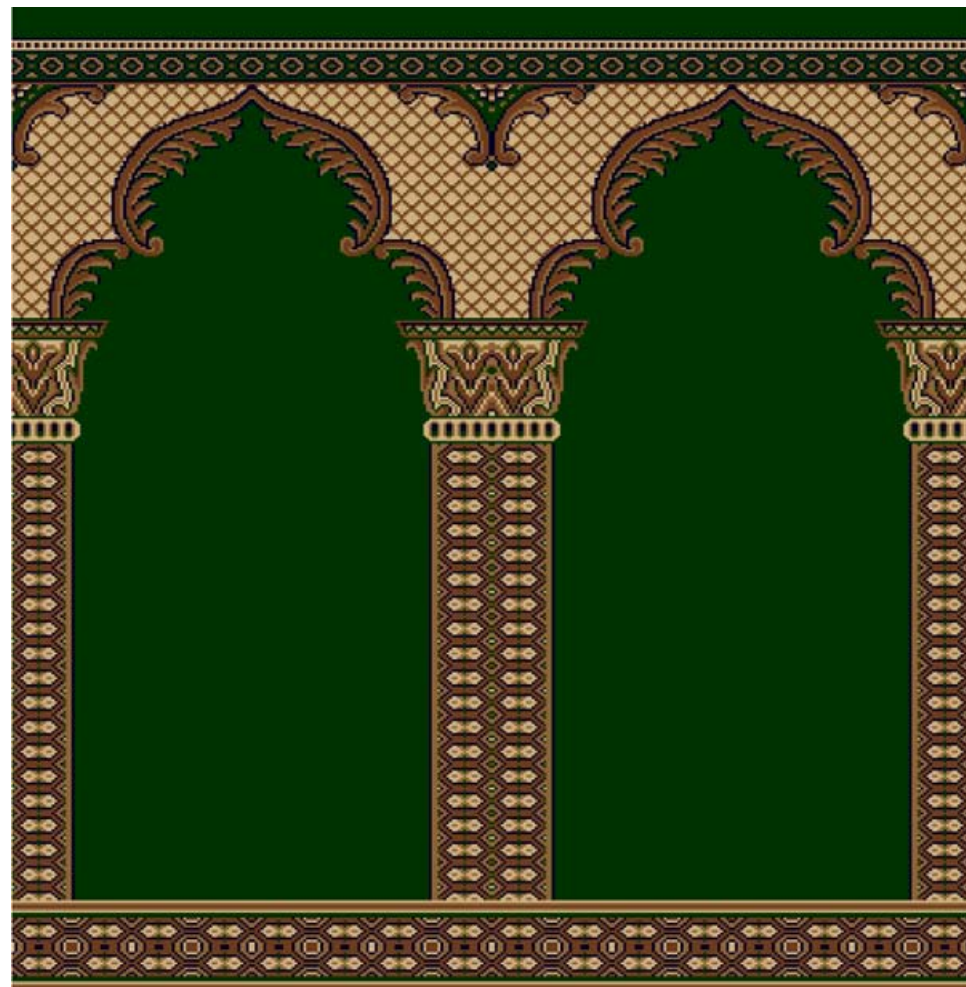
Musalla 14



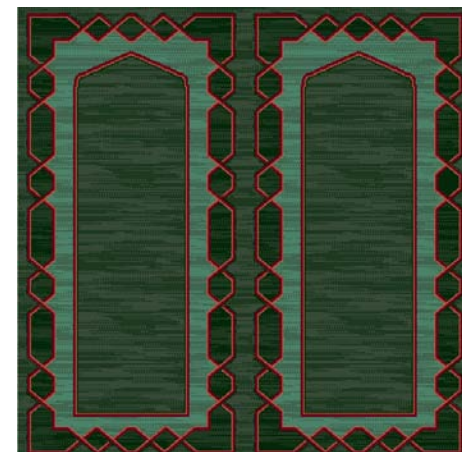
Musalla 1



Musalla 13



Musalla 12



Musalla 9



South Norwood Islamic Centre London



South Norwood Islamic Centre London

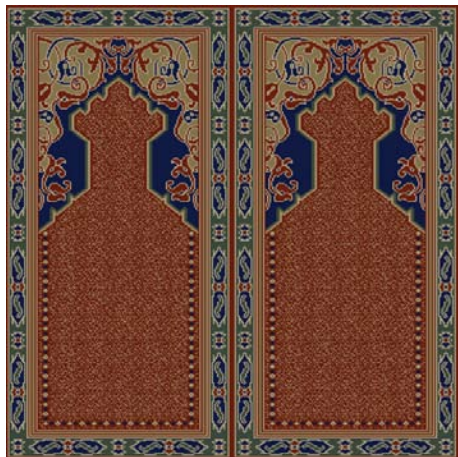




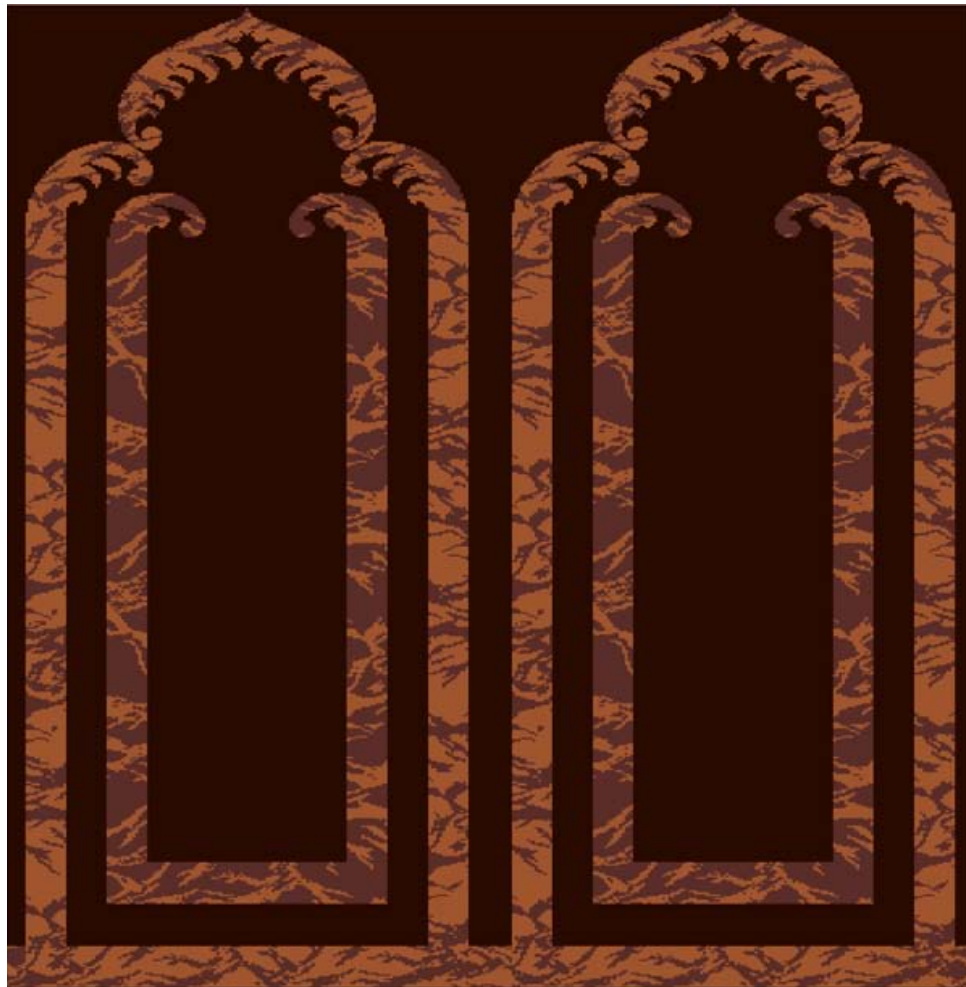
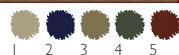
AP-15534



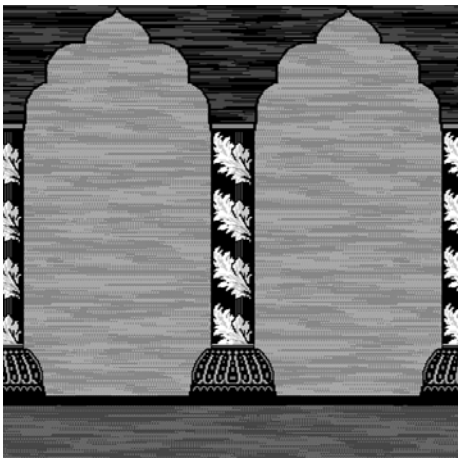
Musalla 11



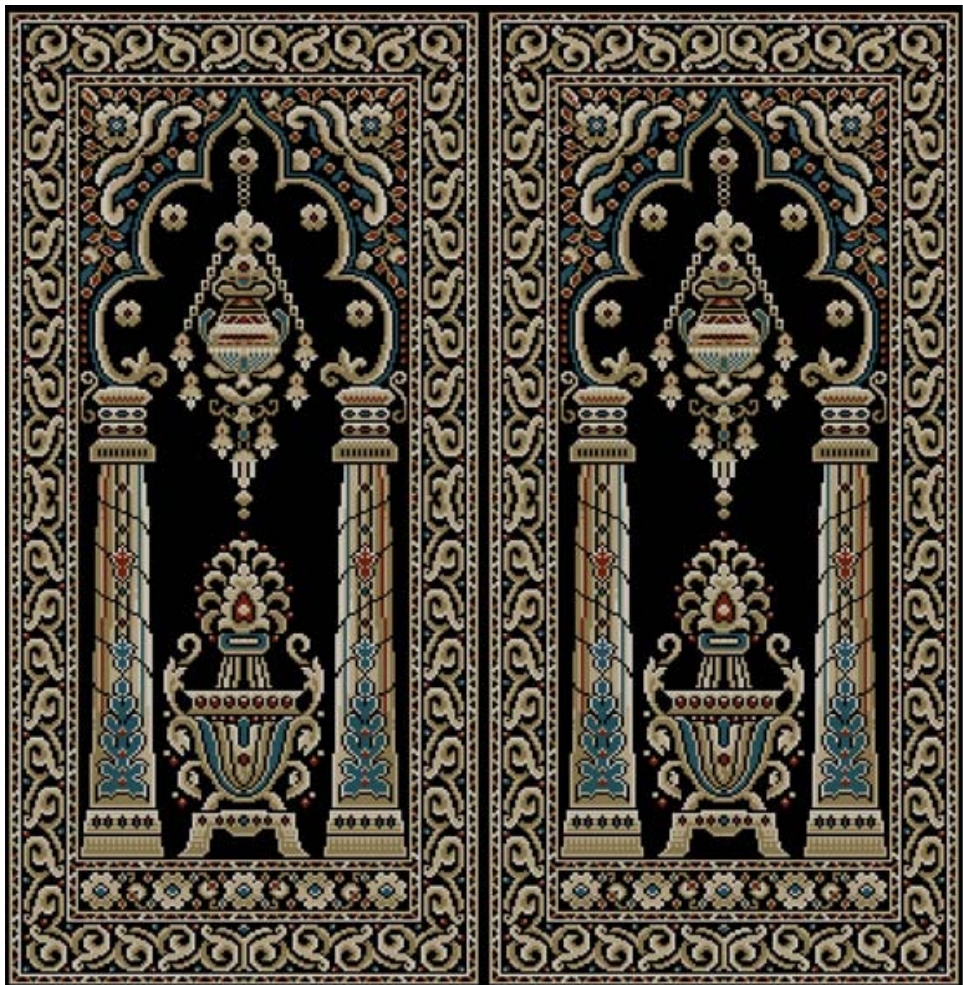
AP-15518



Musalla 7



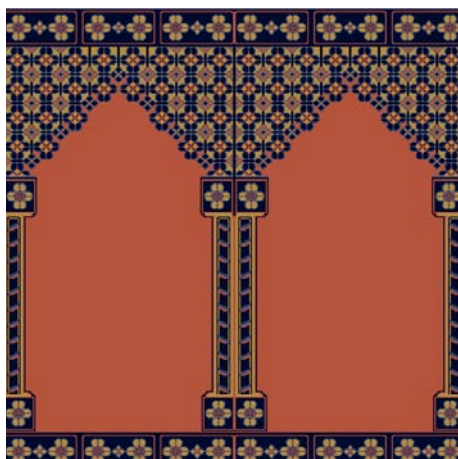
Musalla 20



AP-15502



Musalla 6



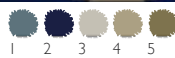
Musalla 2



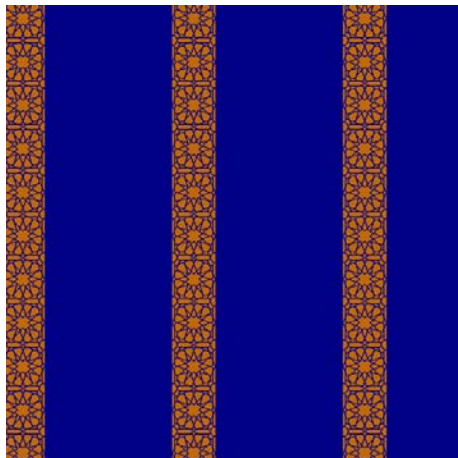




AP-15497



AP-15504



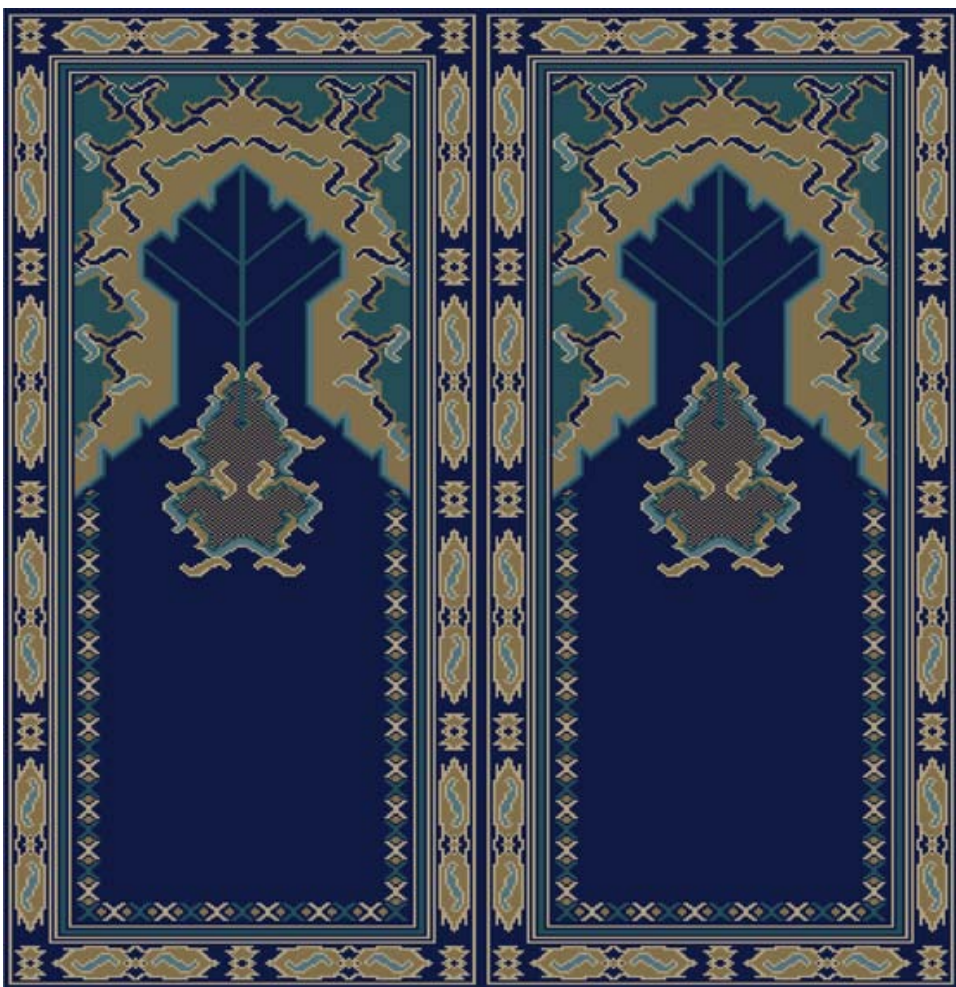
AP-15518



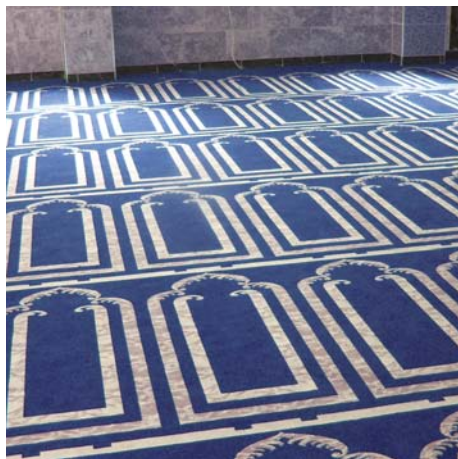
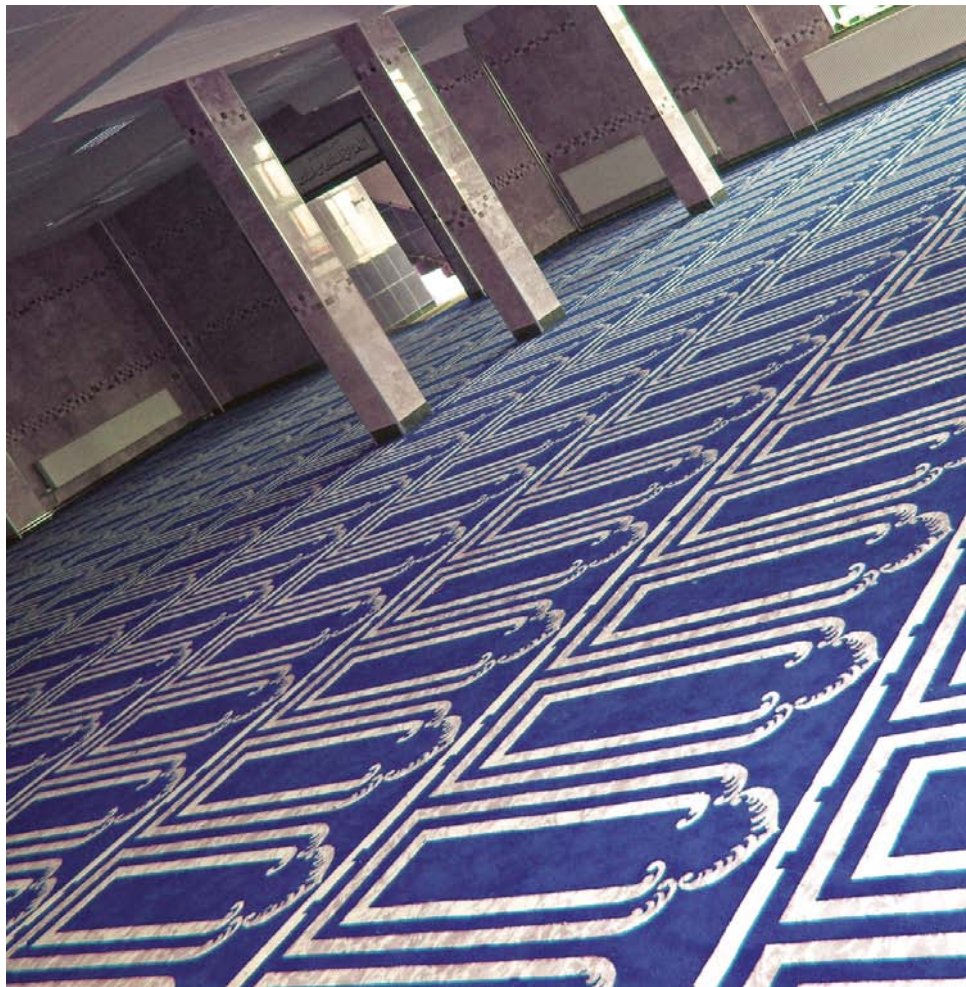
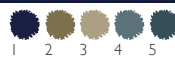
Musalla 19



Musalla 15



Masjide Nooru Islamic Centre Blackburn







# SPECIFICATION

## Bespoke musallas

Construction	Gripper Axminster				
Pile Content	80% Wool, 20% Nylon				
Yarn Count	3/42 yd/oz - TexR 740/3				
Warp	Polypropylene / Cotton				
Weft	Jute				
Backing Finish	Fray Resist Latex				
Number of Colours	Maximum 8 (up to 12 on Electronic Jaquard*)				
Overage	Up to 5%				
Widths Available	27" / 69cm	36" / 91cm	54" / 137cm	12' / 366cm	13'1" / 400cm

QUALITY:		6 ROW	7 ROW	8 ROW	9 ROW	10 ROW
Pitch (per inch/dm)		7 / 27.56	7 / 27.56	7 / 27.56	7 / 27.56	7 / 27.56
Rows (per inch/dm)		6 / 23.62	7 / 27.56	8 / 31.50	9 / 35.43	10 / 39.37
Pile Height		0.26" / 6.8mm	0.26" / 6.8mm	0.29" / 7.6mm	0.29" / 7.6mm	0.29" / 7.6mm
Yarn	oz/yd <sup>2</sup>	27.0	31.5	39.0	44.0	48.8
Weight	g/m <sup>2</sup>	915	1068	1322	1487	1652
Finished	oz/yd <sup>2</sup>	64.0	68.7	73.2	76.6	79.2
Weight	g/m <sup>2</sup>	2173	2328	2482	2597	2685
Light Fastness		BS: 1006 (1-8) 5-6				
Wet Fastness		BS: 1006 (1-5) 4				
Flammability		BS: 4790 Hot Metal Nut Test Pass - Low radius of effects ignition. BS: 6307 Methenamine Pill Test - Pass Euro Test results available on request				
Suitability		General Contract	General Contract	Medium Contract	Heavy Contract	Very Heavy Contract

All specifications subject to normal manufacturing tolerances.

Cut-pile carpets, may show shading/pile reversal.  
This tendency is inherent in all cut pile fabrics  
and is not detrimental to the wear of the carpet.  
It cannot be considered a manufacturing defect.  
It should be noted and taken into consideration when  
selecting colours that darker shades camouflage  
soiling more than lighter shades.  
This applies particularly to contract installations.



## Cavalier Carpets

Dixon St. Blackburn  
Lancashire BB2 1TX  
Tel: 01254 268000

info@cavaliercarpets.co.uk  
www.cavaliercarpets.co.uk