

Cavalier

Carpets



Stock
graphics tufted

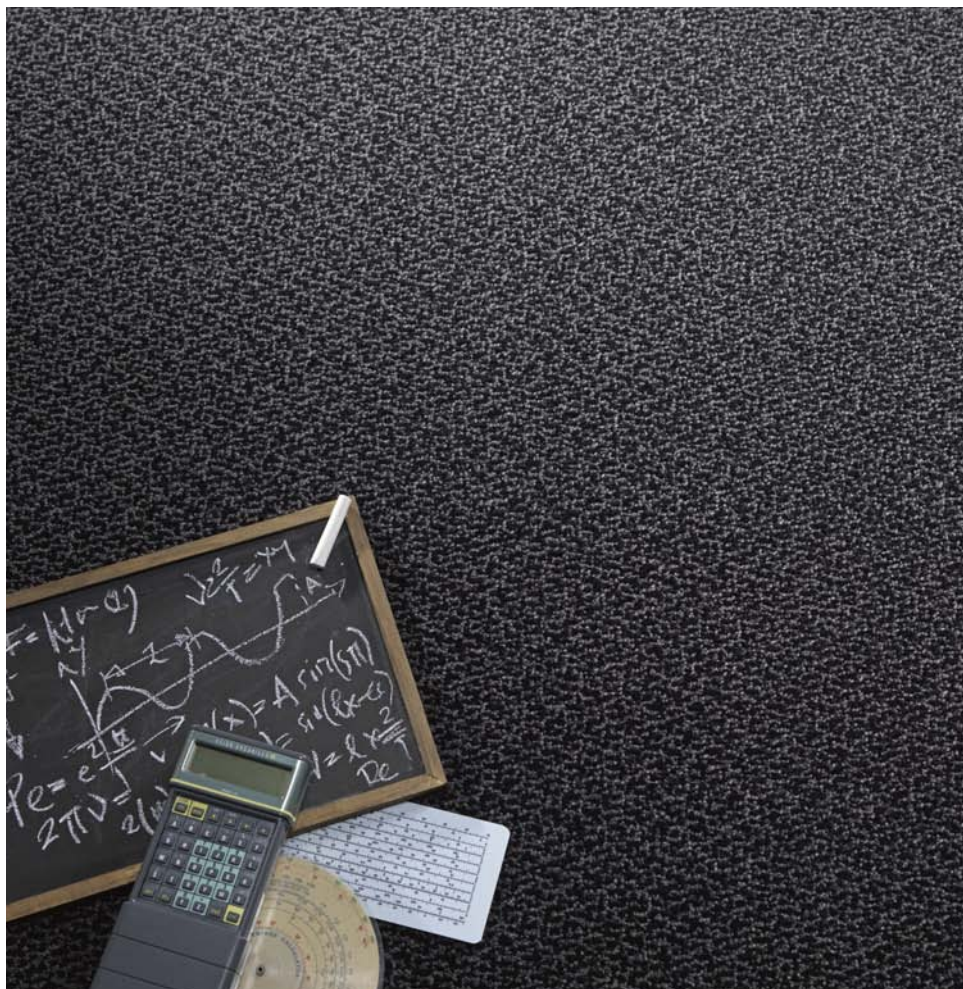
Stock

graphics tufted

The art of Custom Graphics Tufting is all about getting the most out of small geometric & linear designs, to create distinctive and highly functional floorcoverings that work with a particular decorative scheme.



All our stock tufted graphics ranges are proven heavy contract performers, manufactured in our own extensive tufting facility in Blackburn, Lancashire. Each range has an assortment of colorways which are ideally suited to most commercial locations.



Algorithm

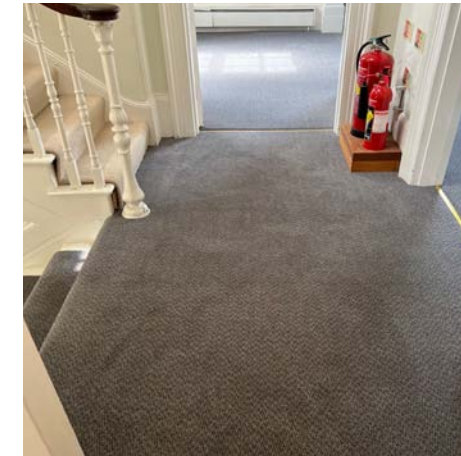
Algorithms are essential to the way computers process data, using well defined mathematical problem solving.

Creating a carpet which has the flexibility to work with a myriad of interiors & colour schemes, is equally challenging.

We have cracked the code, with algorithm, the automatic choice for style & performance.



Napier



Lovelace



Babbage



Turing



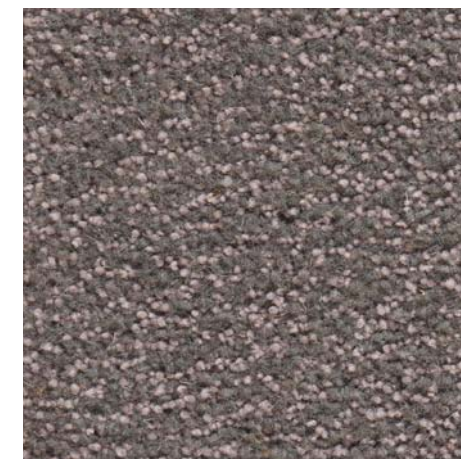
Halley



Wallis



Hamilton



Newton



custom colours of Algorithm, are available for a minimum order quantity of 200m².



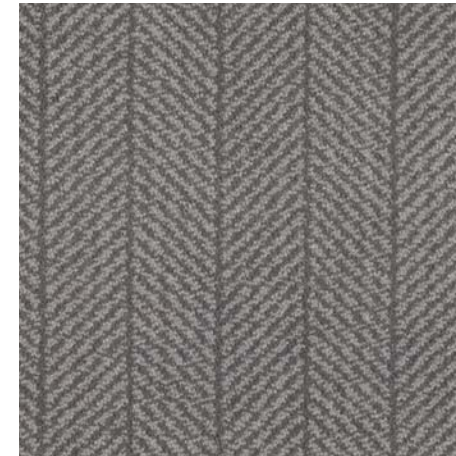
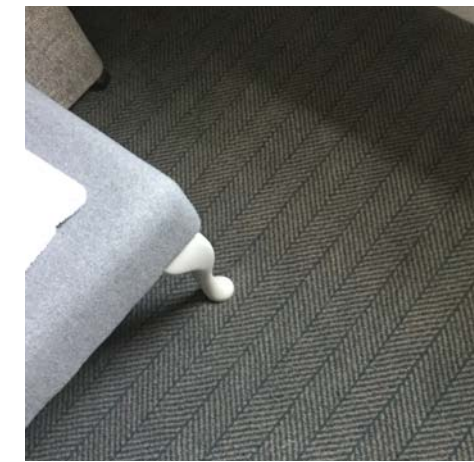
classic Herringbone

Around since roman times, the classic herringbone design has adorned everything from apparel to architecture and never goes out of style.

We have taken this time honoured skeletal pattern and created a collection of subtle tone on tone colourways that would suit a myriad of interior schemes.



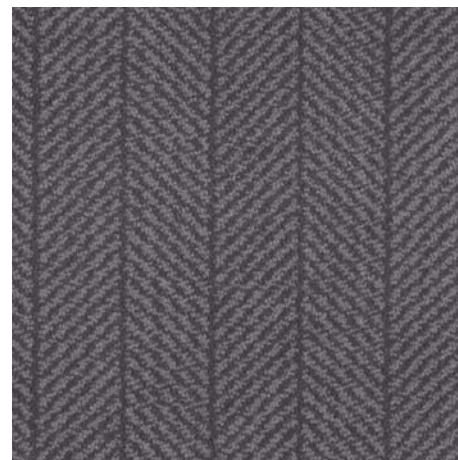
Meier



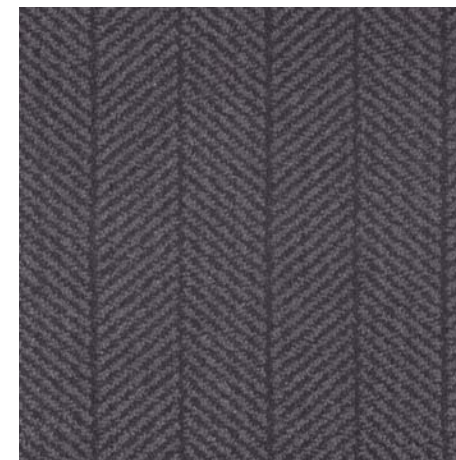
Foster



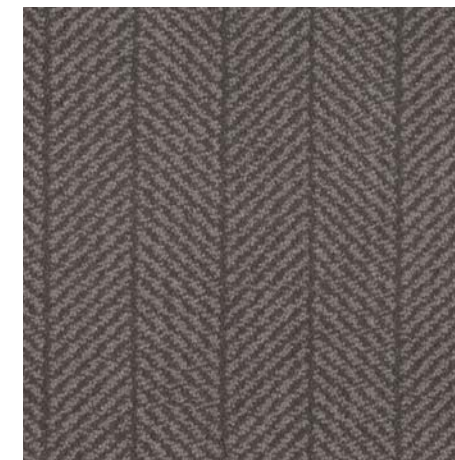
Kaufmann



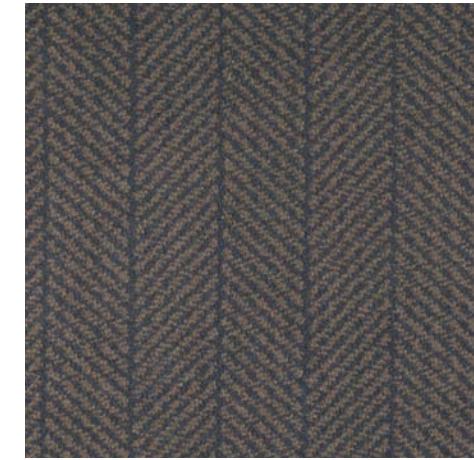
Wright



Holabird



Ellington

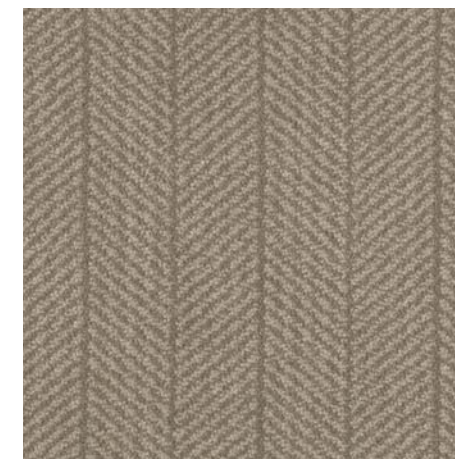


Roche

custom colours
of Herringbone,
are available
for a minimum order
quantity of 200m².



Gaudi



Bernard



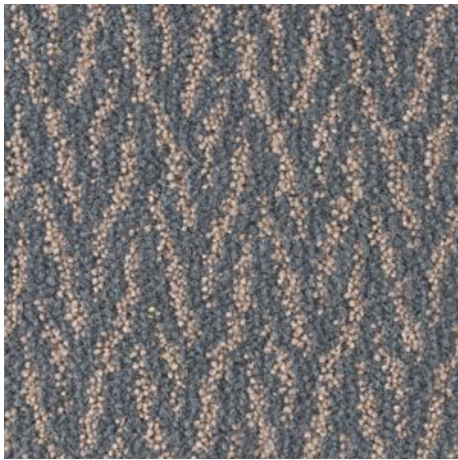
Sullivan



Shadow textures

Tufted graphics carpet by its very nature can often appear mechanical and creating something which has a more organic and elemental look is very difficult to achieve.

Having investigated all the facts, we have developed the perfect solution, the clue is in the carefully selected tone on tone colourways which offers something new to designers and specifiers alike.



Marple



Morse



Vera



Lovejoy



Sherlock



Frost



Fitz



Callan



Foyle



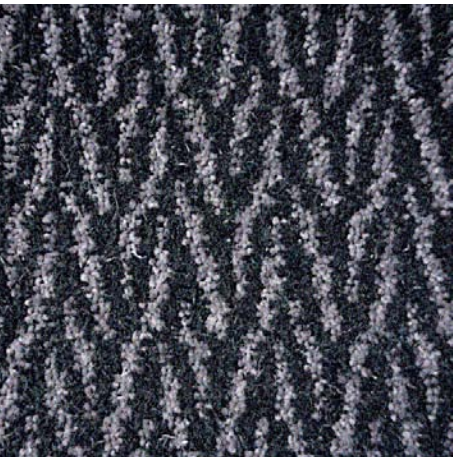
Rebus



Luther



Lewis



Poirot

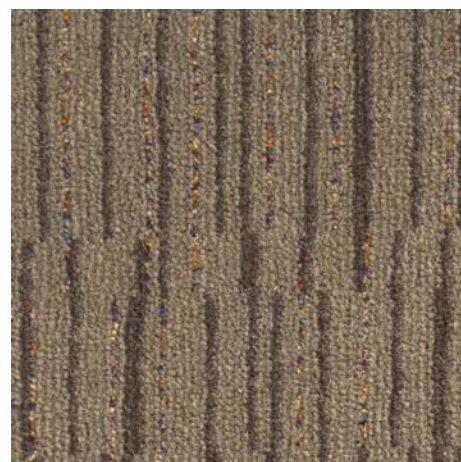
custom colours
of Shadow Textures,
are available
for a minimum order
quantity of 200m².



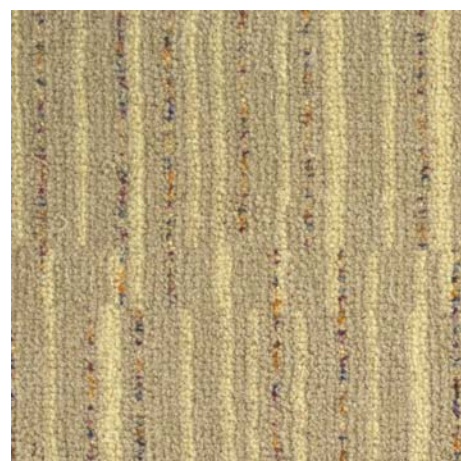
Space Style

As its name suggests, Space Style with a deconstructed linear design was launched with universal appeal built in.

A collection of carefully selected contemporary two tone base colours, brought to life using our unique highlight flash compliments a myriad of fabrics and finishes to suit all locations.



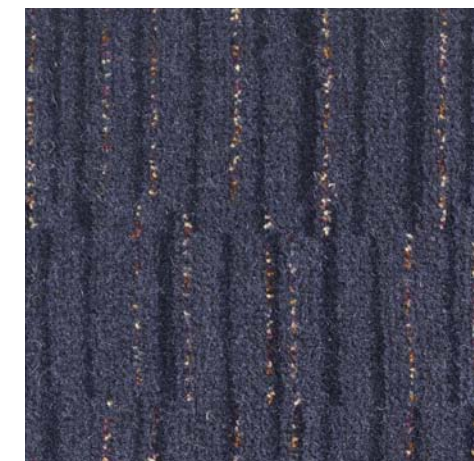
Plasma



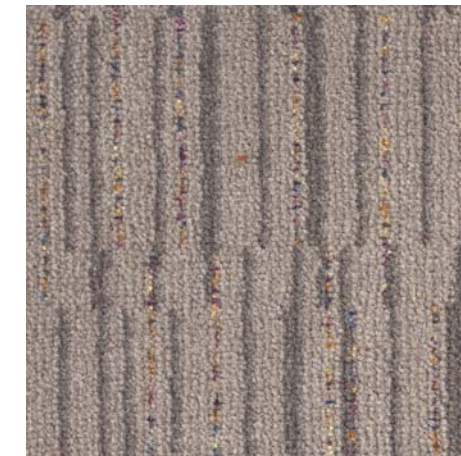
Galaxy



Photon



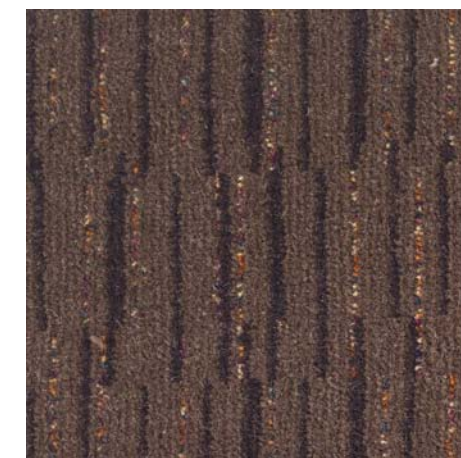
Supernova



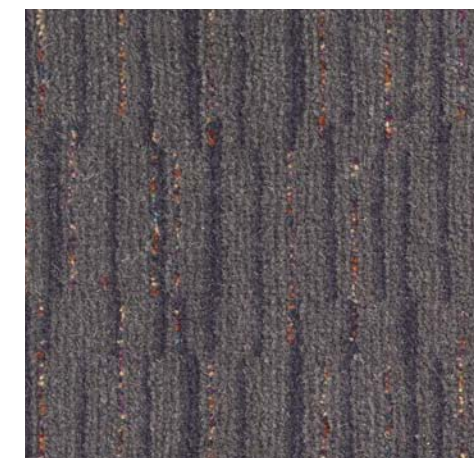
Nebula



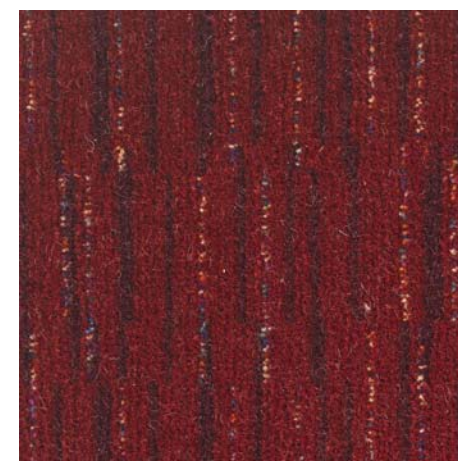
Aurora



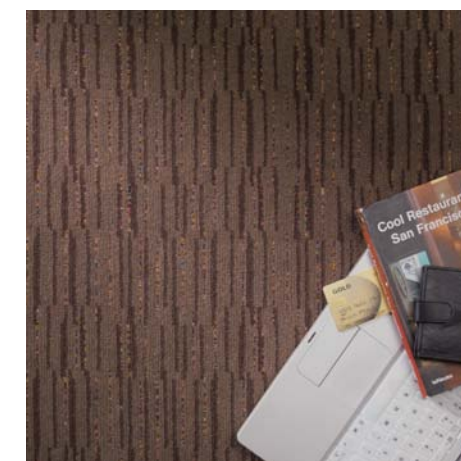
Cosmos



Asteroid



Meteor



Dark Matter



Dark Matter

custom colours of Space Style, are available for a minimum order quantity of 200m².

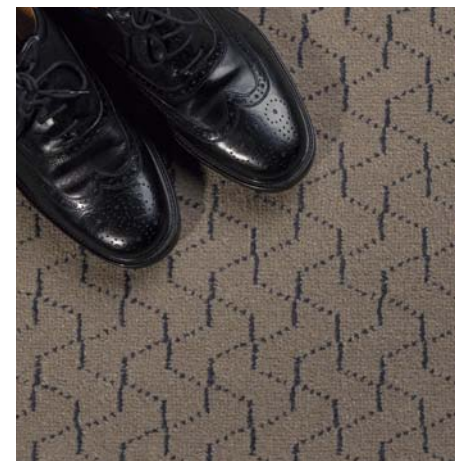




Steps

Tufted graphics carpet design
is all about the
precise art of movement.
Steps uses a sophisticated,
rhythmic pattern, with muted
contrasting colours.

Perfect for hotel bedrooms, public
areas and a myriad of other
hospitality locations.



Jive



Salsa



Waltz



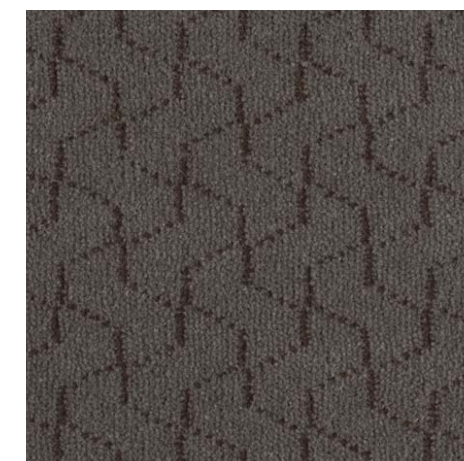
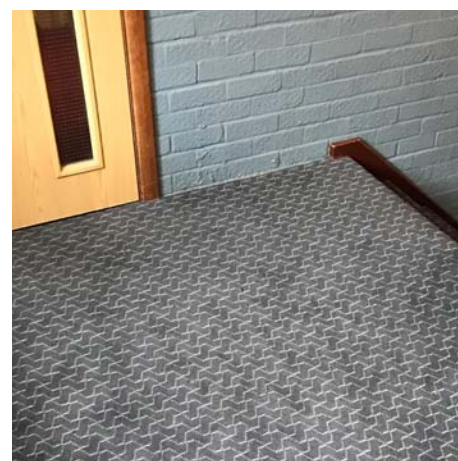
Foxtrot



ChaChaCha



Quickstep



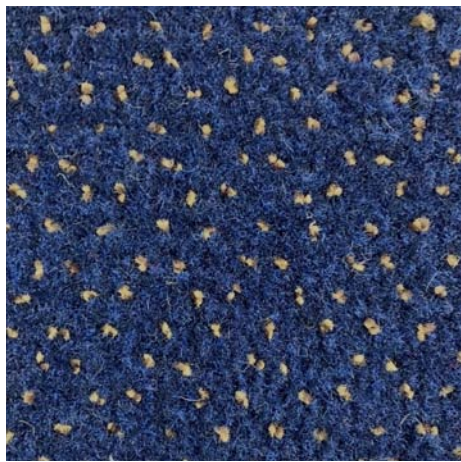
Rhumba



Bolero

custom colours
of Steps,
are available
for a minimum order
quantity of 200m².





Southampton (Air Entangled Nylon)



Naples (Air Entangled Nylon)

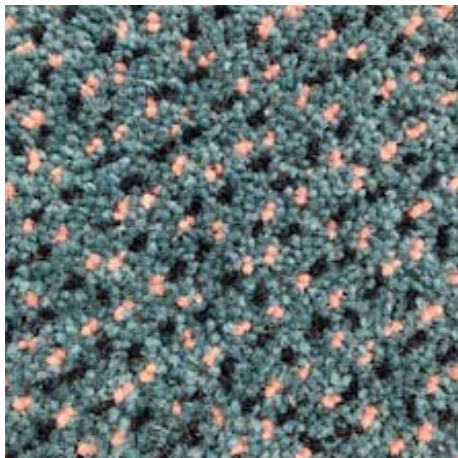


First Port

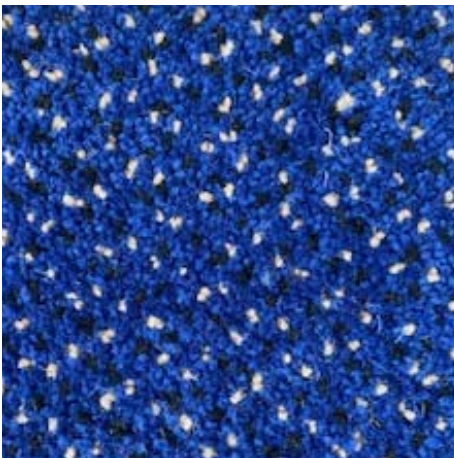
First Port is a competitively priced, stock collection with two distinctly different yarn specifications.

Two colourways in super hardwearing and easy clean, high performance Nylon, particularly suited to high traffic locations.

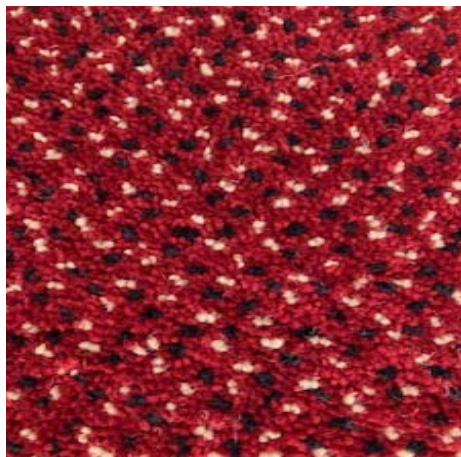
Four carefully selected tones using a Wool/Nylon blend which has IMO Marine Certification, and is suitable for a myriad of commercial applications.



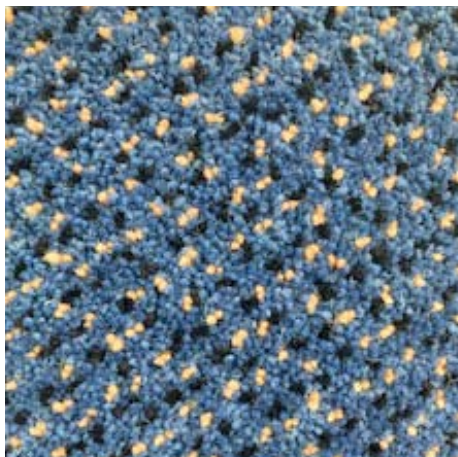
Amsterdam (Wool/Nylon)



Gibraltar (Wool/Nylon)



Marseille (Wool/Nylon)



Barcelona (Wool/Nylon)



Product Specifications

	Classic Herringbone Shadow Textures Space Style Steps	Algorithm	First Port Wool/Nylon	First Port Nylon
Construction	Graphics Tufted	Graphics Tufted	Graphics Tufted	Graphics Tufted
Pile Content	80% Wool, 20% Nylon	80% Wool, 20% Nylon	80% Wool, 20% Nylon	100% Air Entangled Nylon
Gauge	31.5 / 10cm, (1/8th)	39.4/ 10cm, (1/10th)	39.4/ 10cm, (1/10th)	31.5 / 10cm, (1/8th)
Yarn Weight	1288g/m², 38oz/yd²	1423g/m², 42oz/yd²	1220g/m², 36oz/yd²	900g/m², 27oz/yd²
Total Finished Weight	2440g/m², 72oz/yd²	2587g/m², 76oz/yd²	2373g/m², 70oz/yd²	1850g/m², 55oz/yd²
Suitability	Heavy Contract	Heavy Contract	Heavy Contract	Heavy Contract
Width	4.00m	4.00m	4.00m	4.00m
Pile Height	6.5mm / 0.25"	6.5mm / 0.25"	6.5mm / 0.25"	6.5mm / 0.25"
Backing	Secondary	Secondary	Secondary	Secondary
Tog Rating	0.90	0.85	1.06	0.90
Light Fastness	BS: 1006 (I-8) 6	BS: 1006 (I-8) 6	BS: 1006 (I-8) 6	BS: 1006 (I-8) 6
Rub Fastness	BS: 1006 (I-5) 4-5	BS: 1006 (I-5) 4-5	BS: 1006 (I-5) 4-5	BS: 1006 (I-5) 4-5
Shampoo Colour Fastness	BS: 1006 (I-5) 4-5	BS: 1006 (I-5) 4-5	BS: 1006 (I-5) 4-5	BS: 1006 (I-5) 4-5
Flammability	BS: BS4790 1987(1996) Pass - Low radius of char	BS: BS4790 1987(1996) Pass - Low radius of char	BS: BS4790 1987(1996) Pass - Low radius of char	BS: BS4790 1987(1996) Pass - Low radius of char

IMO Certificate (Marine Equipment Directive 96/98/EC) II-2/3.40.4 IMO Resolution A 653 (16) II-2/5.3.24 IMO Resolution MSC 61 (67) Annex 1 Part 5 II-2/6.2 IMO Resolution MSC 61 (67) Annex 1 Part 2	YES	YES	YES	NO
--	-----	-----	-----	----

Product Options

The following options are available for a minimum 300m²:
Special Colours
Special Widths up to 5m
Special Backings



Cavalier
Carpets

Dixon St. Blackburn
Lancashire BB2 1TX
Tel: 01254 268000

info@cavaliercarpets.co.uk
www.cavaliercarpets.co.uk