

Cavalier

Carpets



Bespoke
printed

Bespoke printed

Our carpets have been installed around the world, from hotels and casinos through to ocean liners, embassies and palaces. We are proud to continue to design and manufacture to the highest quality in Great Britain.



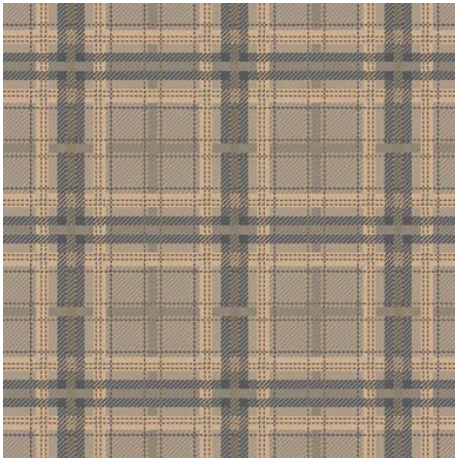
Printed carpet is a relatively modern floorcovering concept, its manufacture and the technology which supports it is constantly evolving, to the point that it is now a valid option to decorative woven products. Printing offers bespoke flexibility, using up to twelve colours across a range of quality specifications, with the ability to elaborate design concepts in relatively small volumes.



AP-14697



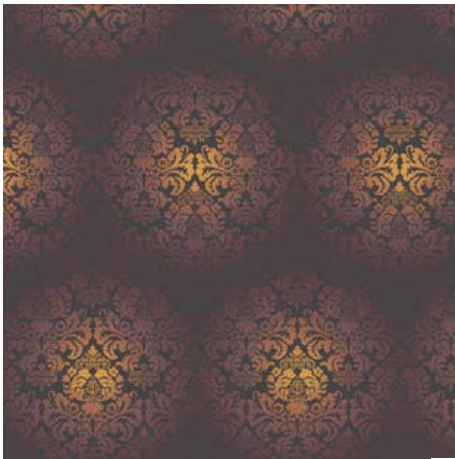
AP-14675



AP-14678



AP-14709



AP-14690



AP-14676



AP-14677

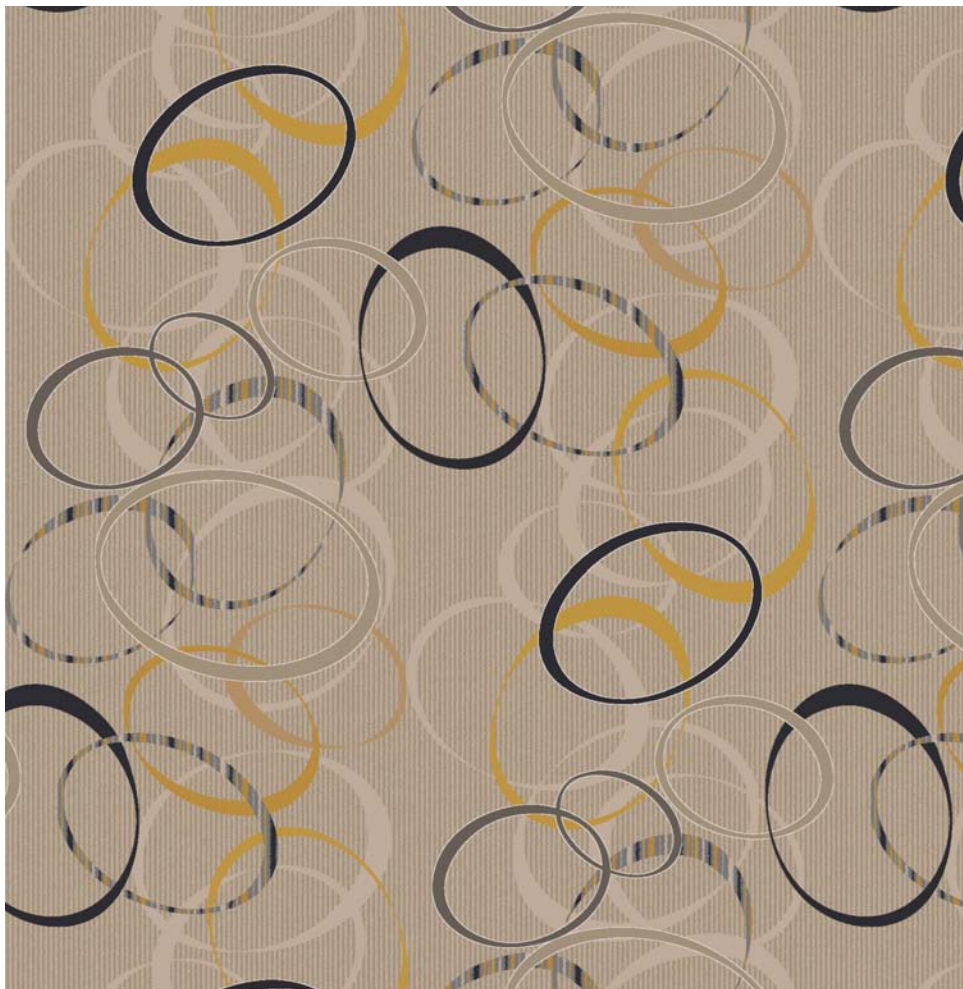


AP-14680





AP-14679



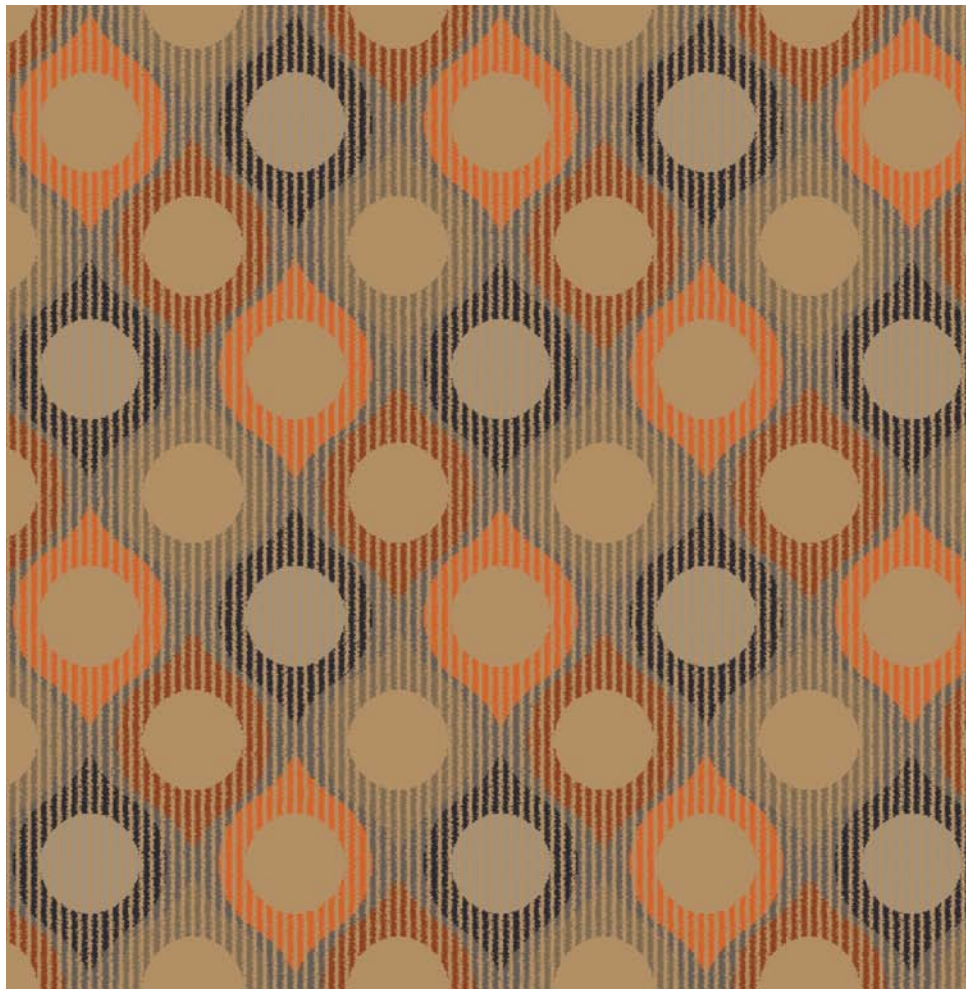
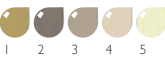
AP-14694



AP-14697



AP-14707



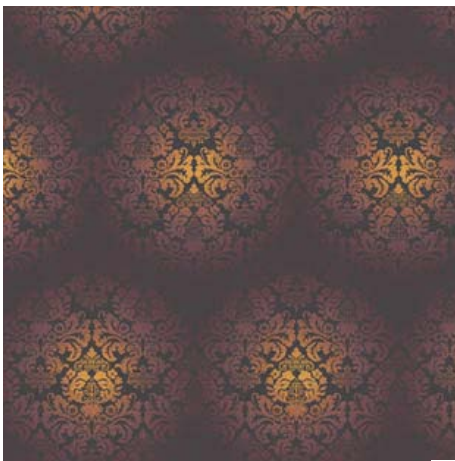
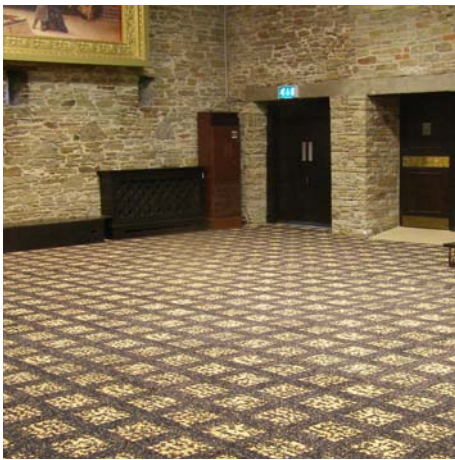
AP-14696



AP-14713



AP-14714



AP-14690



AP-14684

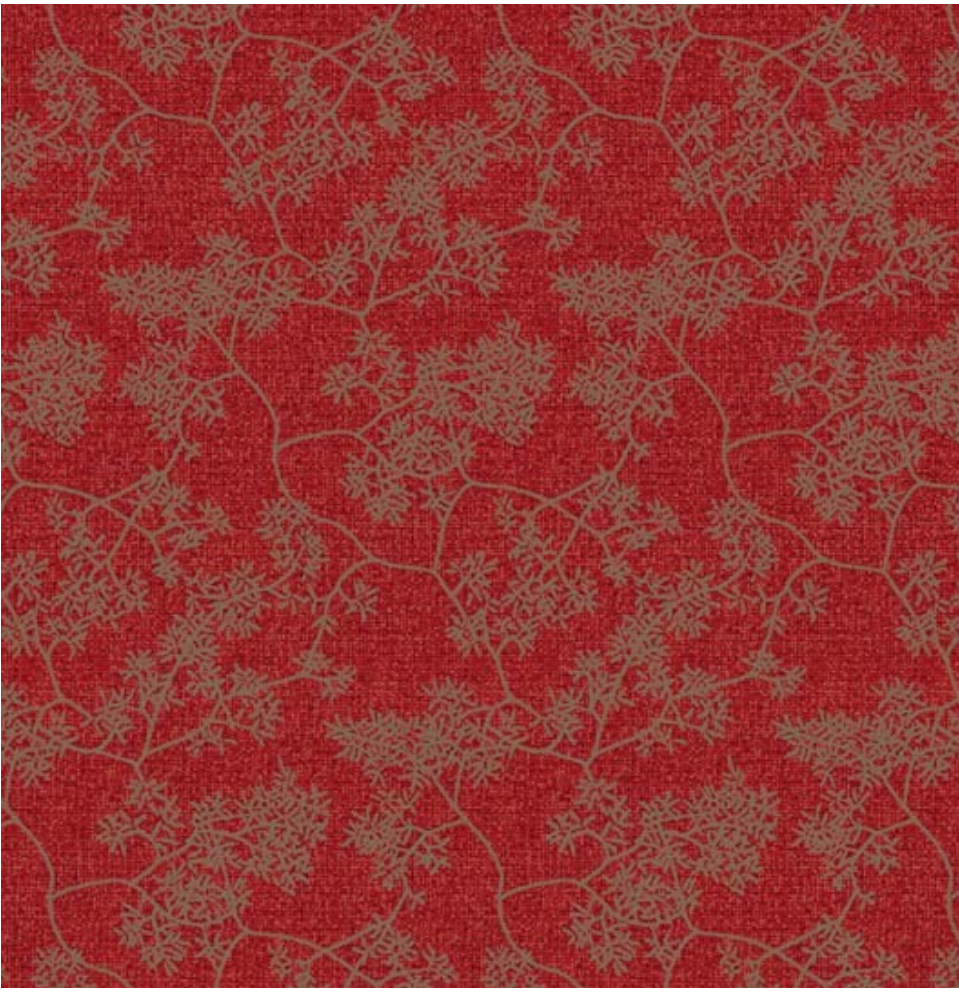




AP-14773



AP-11598



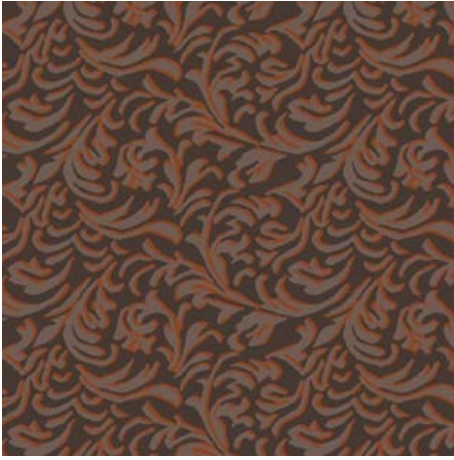
AP-14702



AP-14698



AP-14693



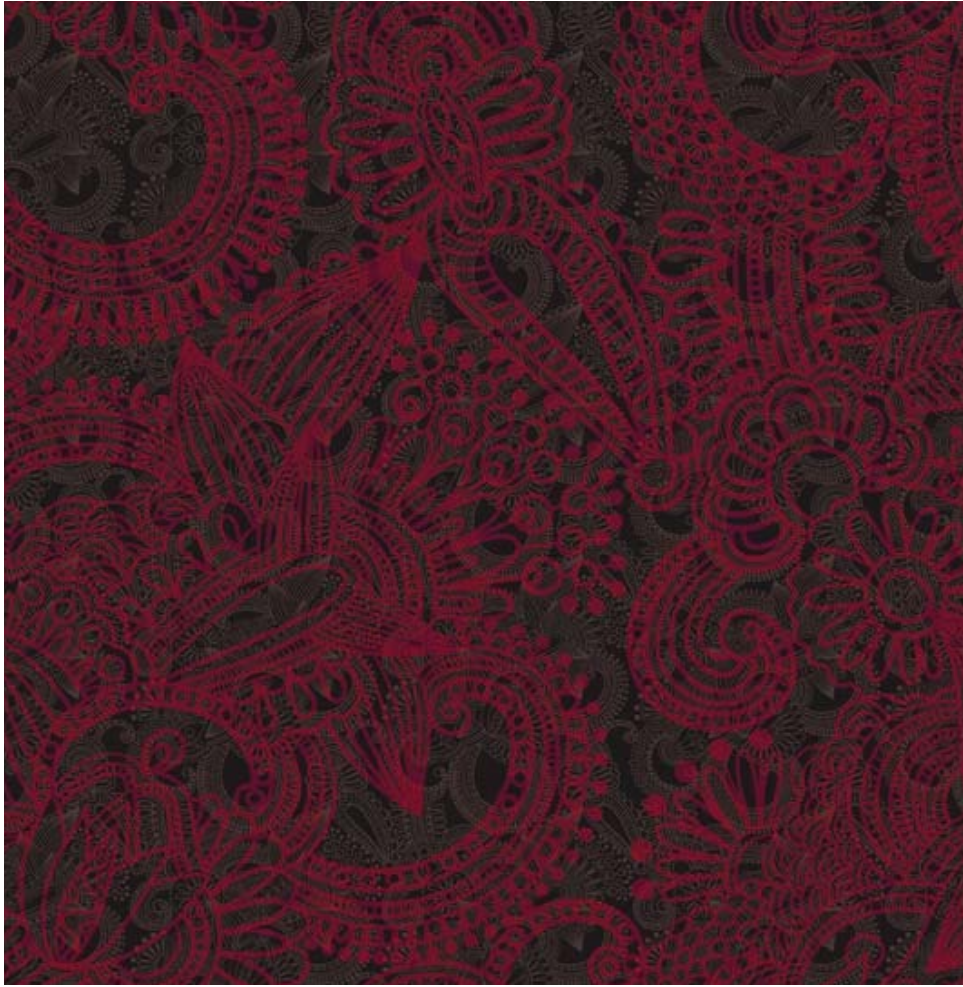
AP-14701



AP-14688

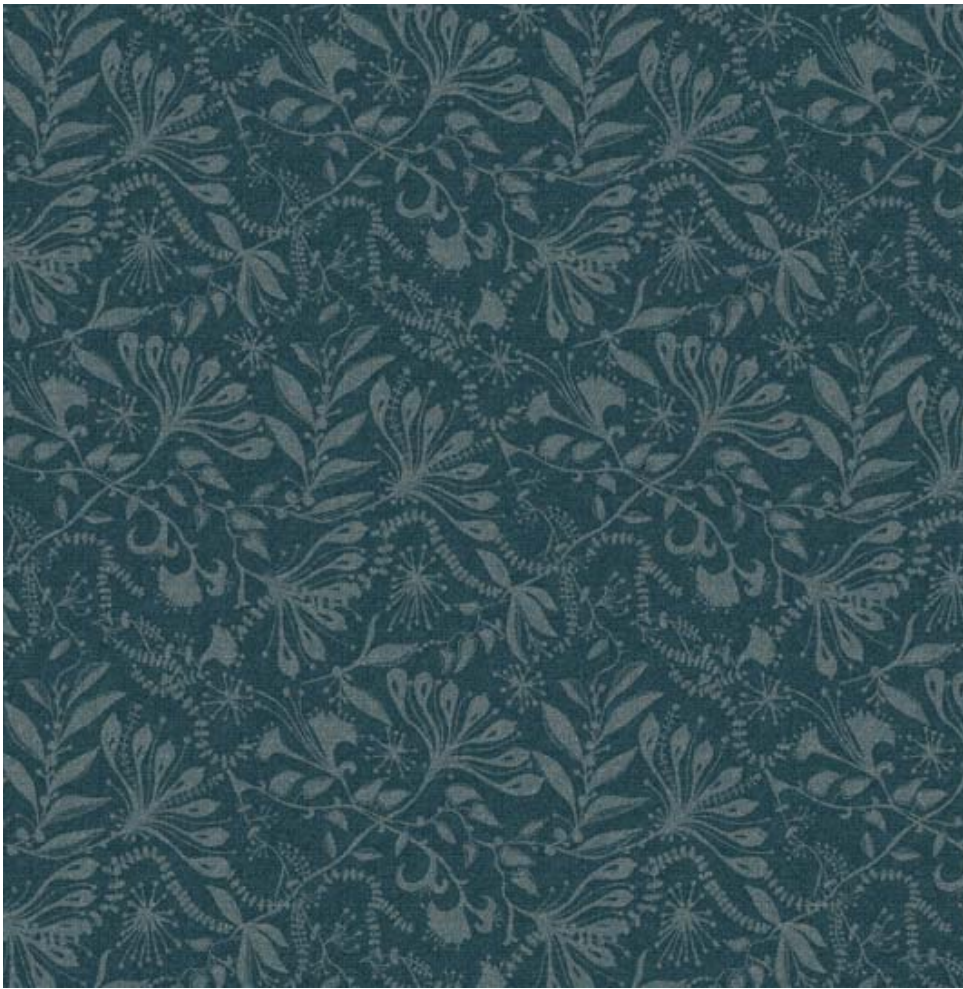


AP-14703

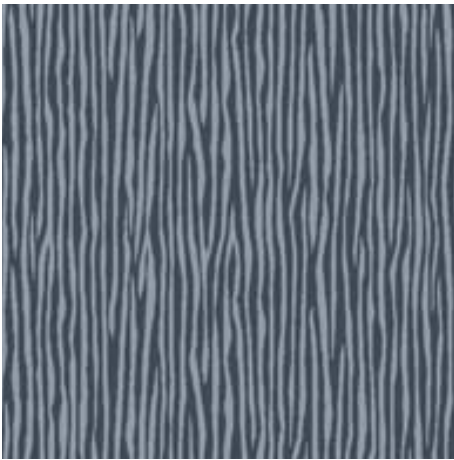


AP-14700





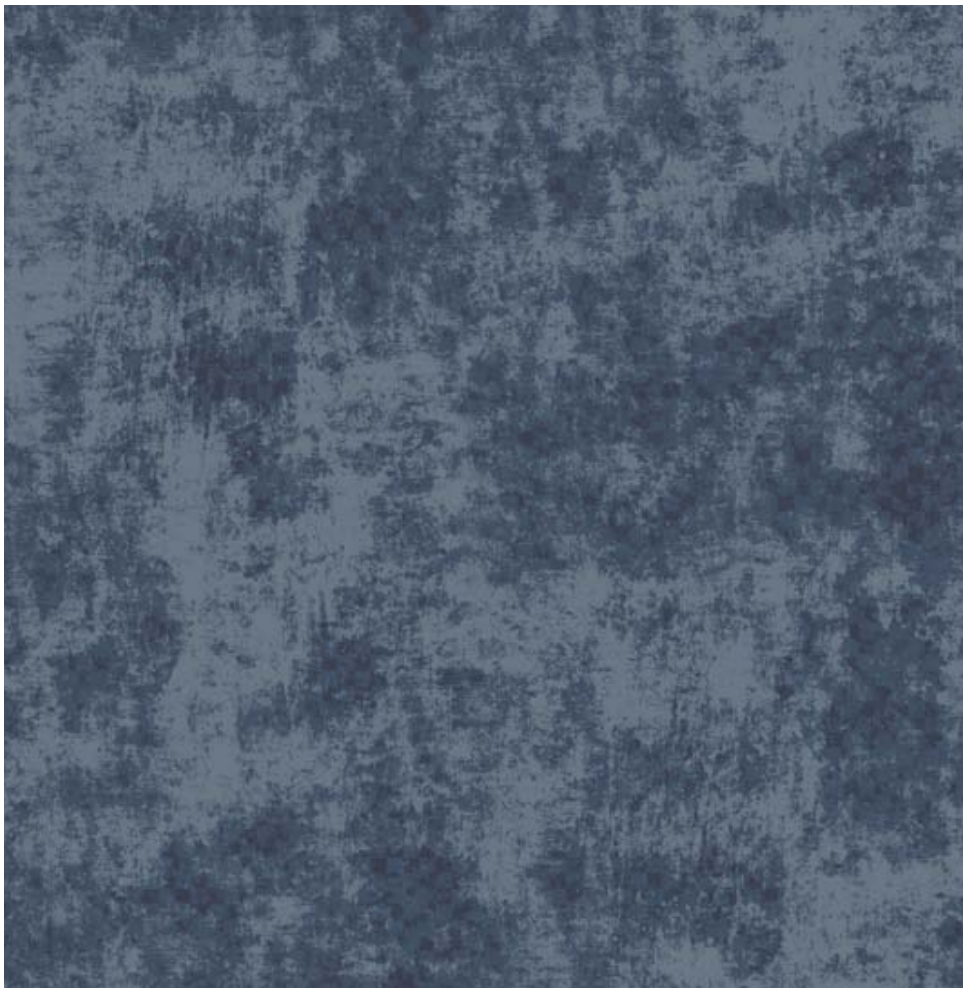
AP-14705



AP-14710



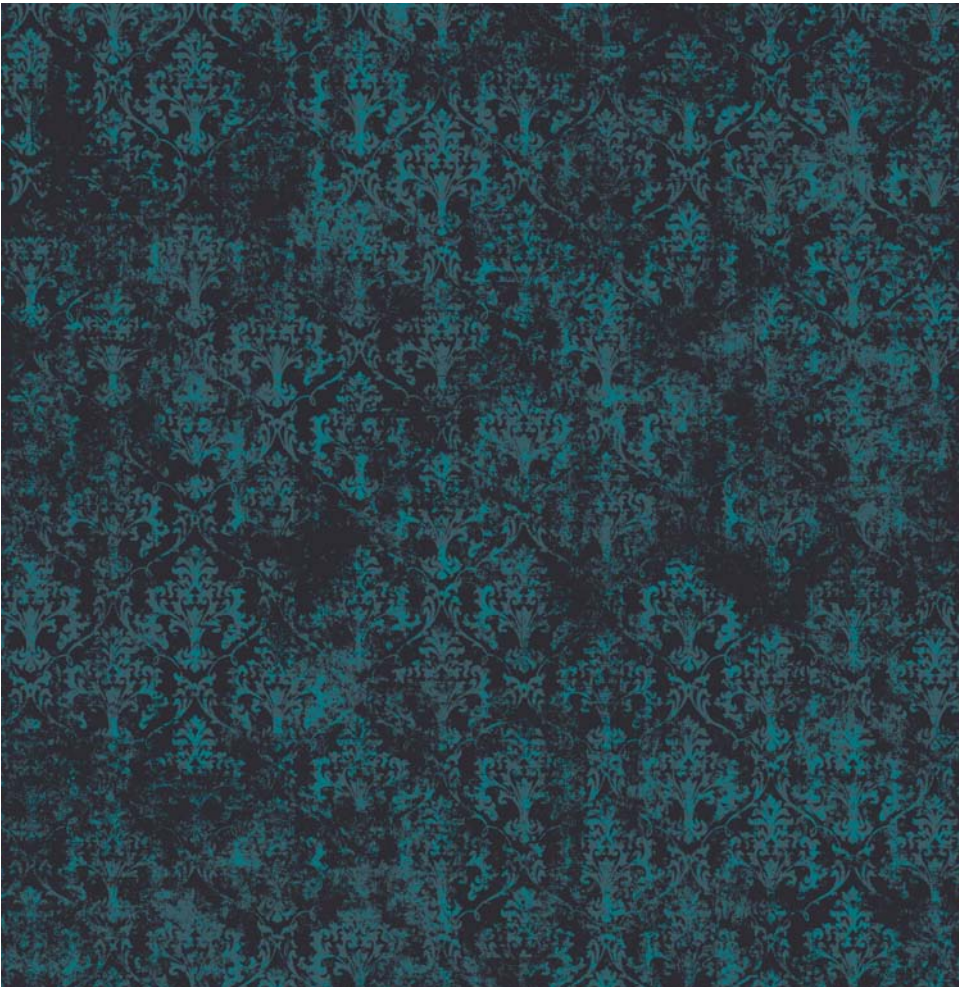
AP-14686



AP-14687



AP-14718



AP-14689



AP-14711



AP-14706

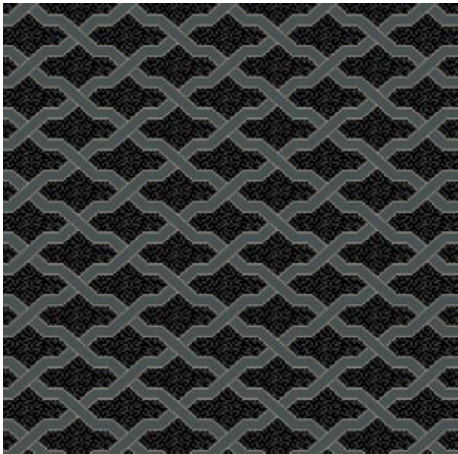


AP-14707





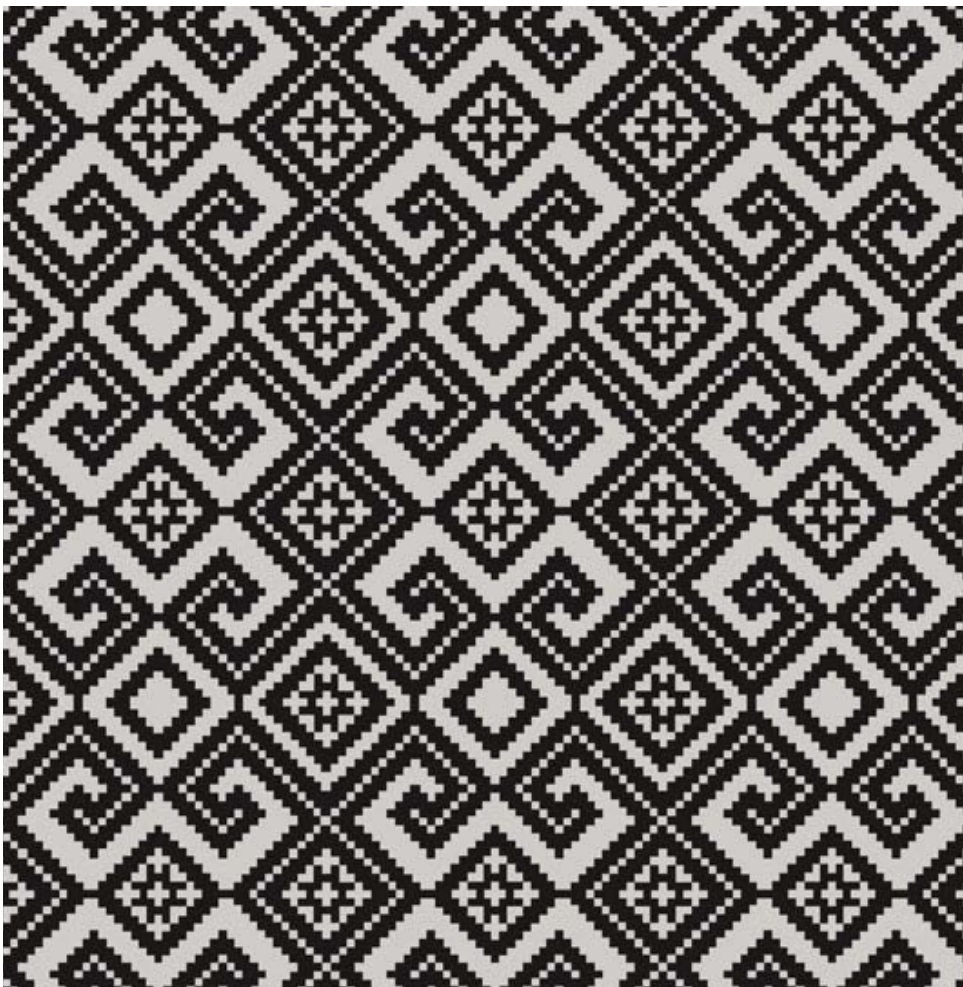
Allsorts



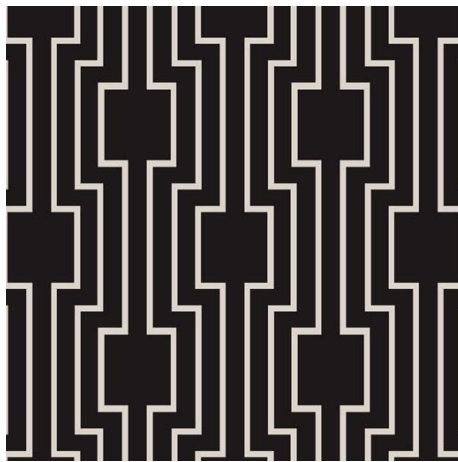
Crosstep



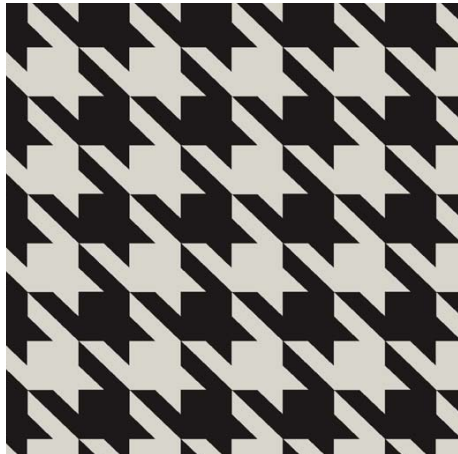
AP-14673



AP-14685



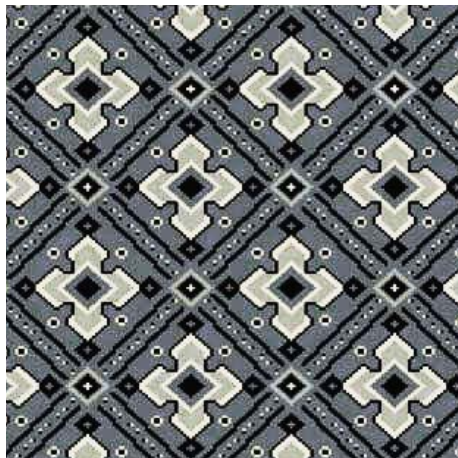
AP-14681



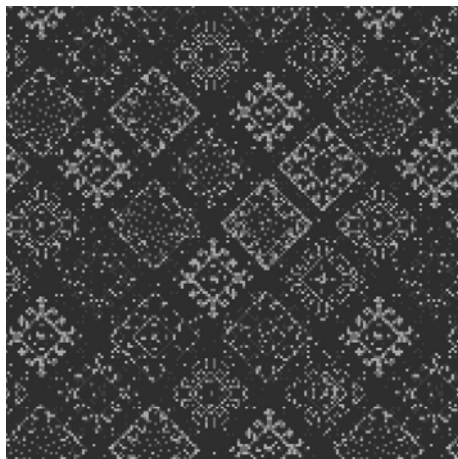
AP-14683



Vineyard



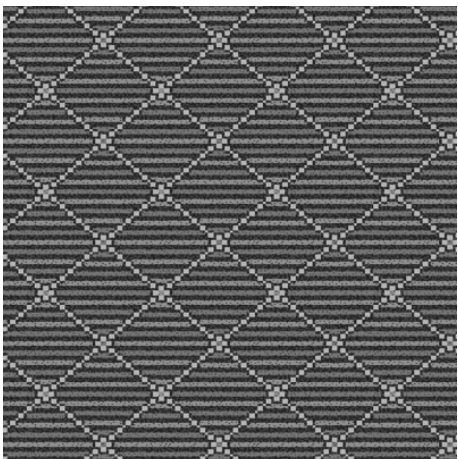
AP-14928



Chalka



AP-14682



Masai



AP-14684



SPECIFICATION

Bespoke printed

Construction	Tufted
Pile Content	100% Nylon
Print Method	Chromojet
Primary Backing	Non Woven
Secondary Backing	Woven Polypropylene
Number of Colours	Maximum 12
Width	400cm

QUALITY:	CAV500	CAV750	CAV900	CAV900L	CAV1050	CAV1250
Pile Type	Cut	Cut	Cut	Loop	Cut	Cut
Pile Weight g/m ²	523	780	910	906	1060	1308
Total Weight g/m ²	1533	1830	1970	1864	2190	2241
Pile Height mm	3.2	4.2	4.4	3.1	5.0	5.7
Total Thickness mm	5.0	6.0	7.0	6.0	8.0	8.5
Suitability	Heavy Contract	Heavy Contract	Heavy Contract	Heavy Contract	Heavy Contract	Heavy Contract

Light Fastness	BS: 1006 (1-8) 5-6
Wet Fastness	BS: 1006 (1-5) 4
Flammability	BS: 4790 Hot Metal Nut Test: Pass - Low radius of effects ignition. BS: 6307 Methenamine Pill Test - Pass Euro Test results available on request

All specifications subject to normal manufacturing tolerances.

Cut-pile carpets, may show shading/pile reversal.
This tendency is inherent in all cut pile fabrics
and is not detrimental to the wear of the carpet.
It cannot be considered a manufacturing defect.
It should be noted and taken into consideration when
selecting colours that darker shades camouflage
soiling more than lighter shades.
This applies particularly to contract installations.



CE EN 14041 2004
Classification Bfl s1
(C Flooring)



THE CAMPAIGN
FOR WOOL
PATRON: HER THE PRINCE OF WALES

Cavalier Carpets

Dixon St. Blackburn
Lancashire BB2 1TX
Tel: 01254 268000

info@cavaliercarpets.co.uk
www.cavaliercarpets.co.uk